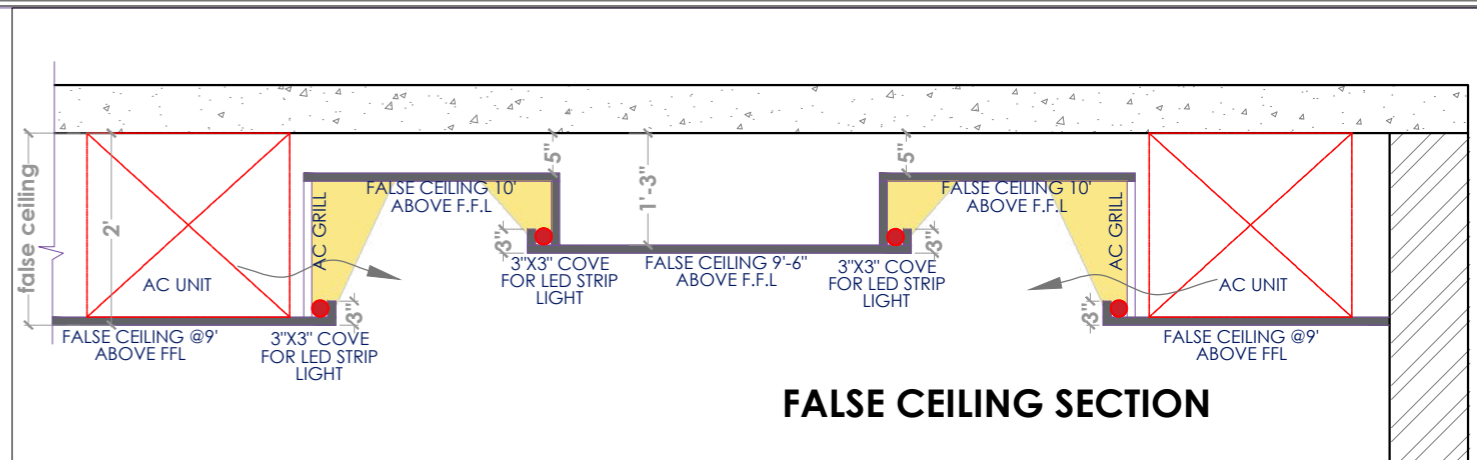
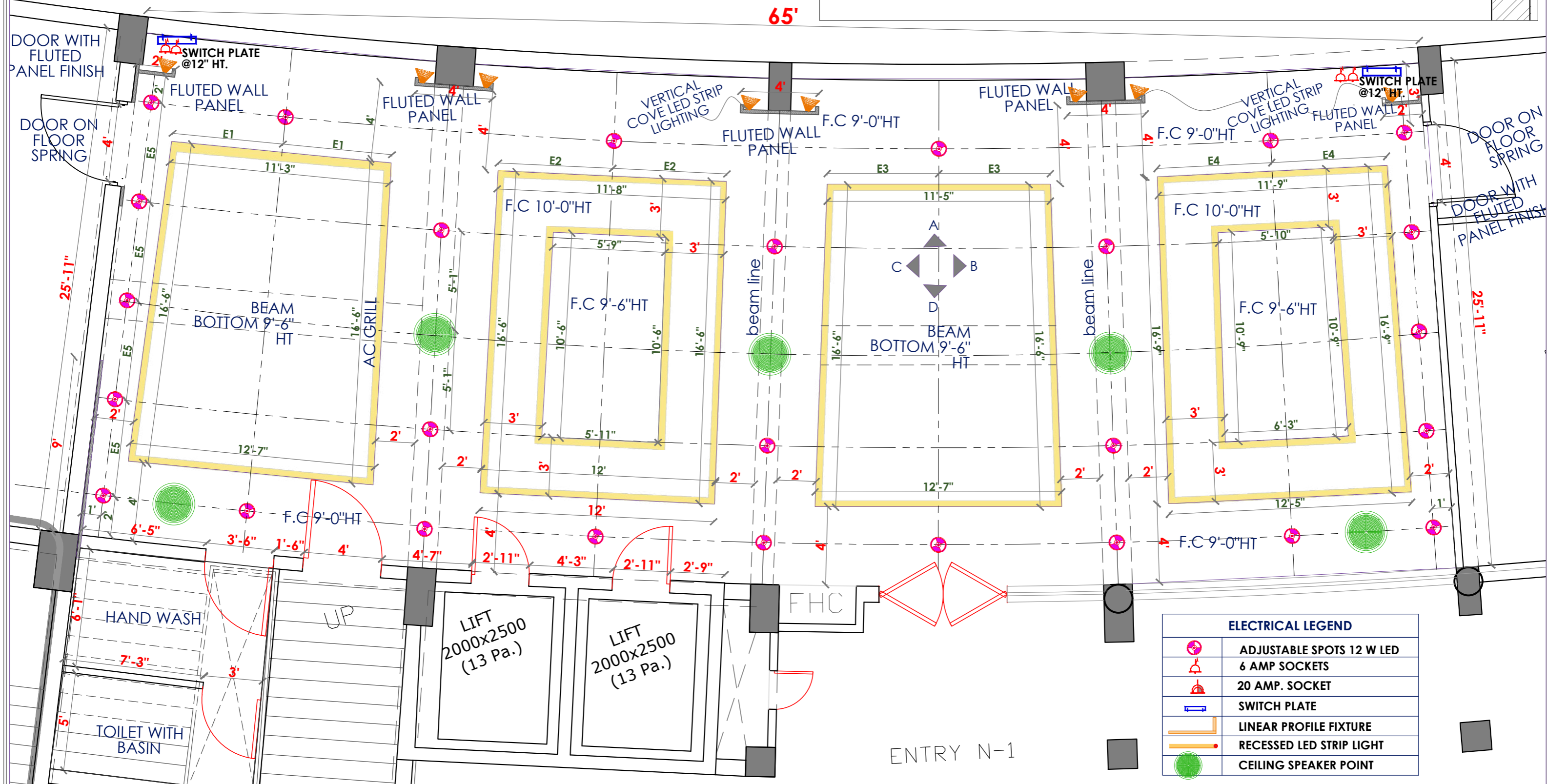


KITCHEN

65'



FALSE CEILING SECTION

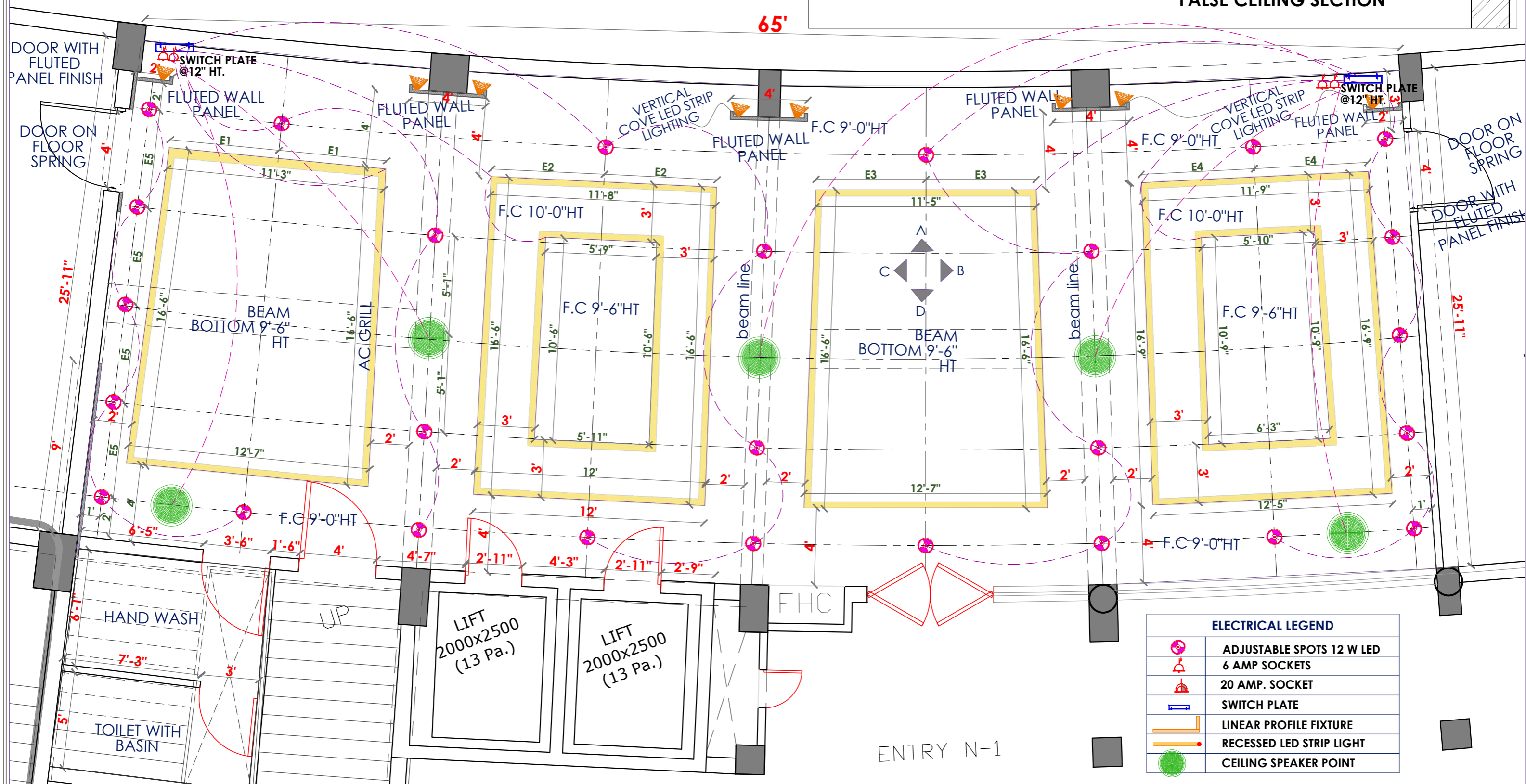
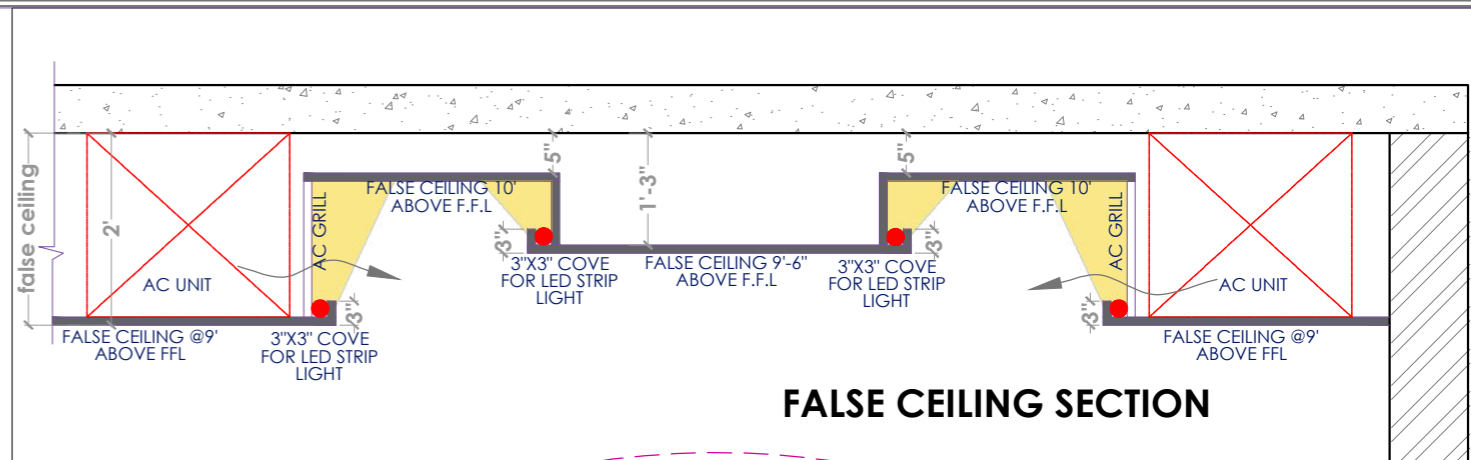


ELECTRICAL LEGEND	
	ADJUSTABLE SPOTS 12 W LED
	6 AMP SOCKETS
	20 AMP. SOCKET
	SWITCH PLATE
	LINEAR PROFILE FIXTURE
	RECESSED LED STRIP LIGHT
	CEILING SPEAKER POINT



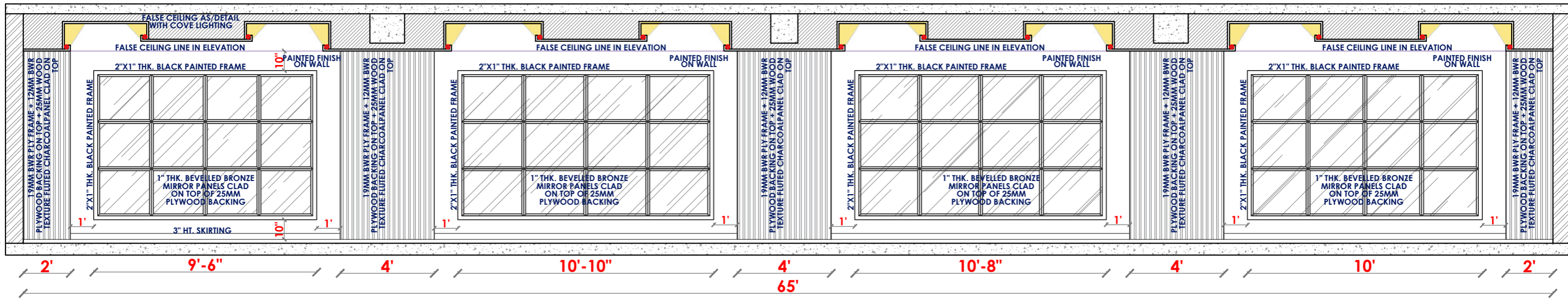
KITCHEN

65'

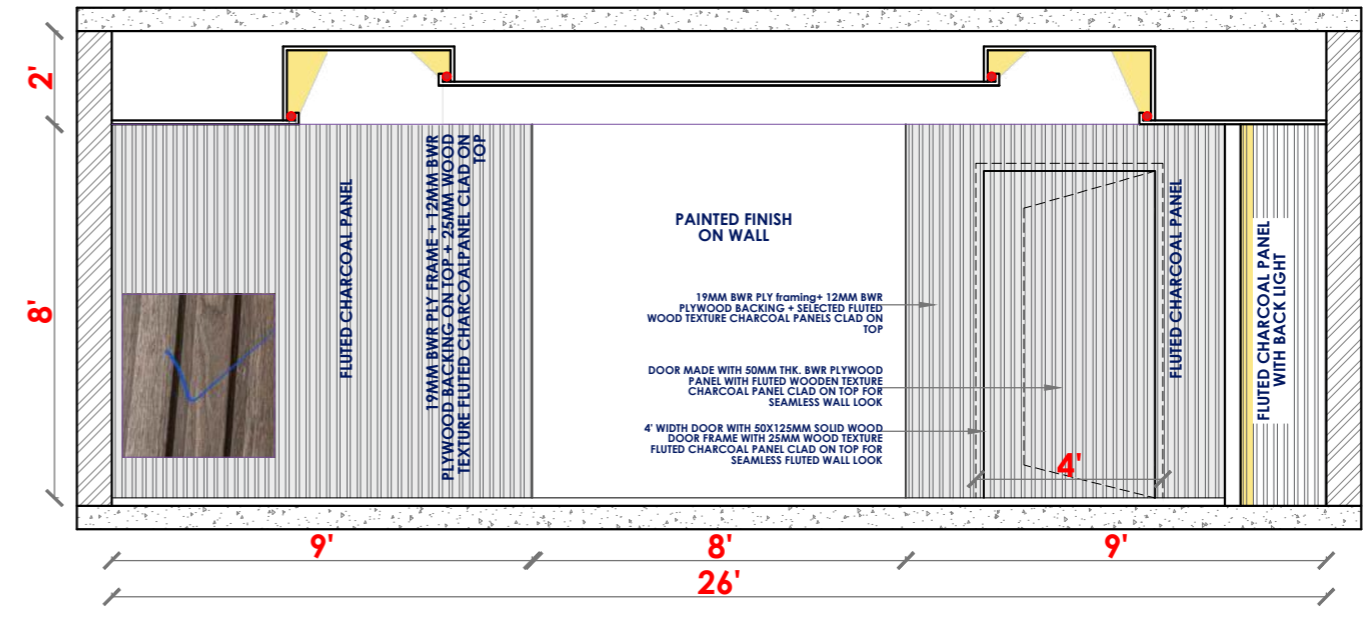


ELECTRICAL LEGEND	
	ADJUSTABLE SPOTS 12 W LED
	6 AMP SOCKETS
	20 AMP. SOCKET
	SWITCH PLATE
	LINEAR PROFILE FIXTURE
	RECESSED LED STRIP LIGHT
	CEILING SPEAKER POINT



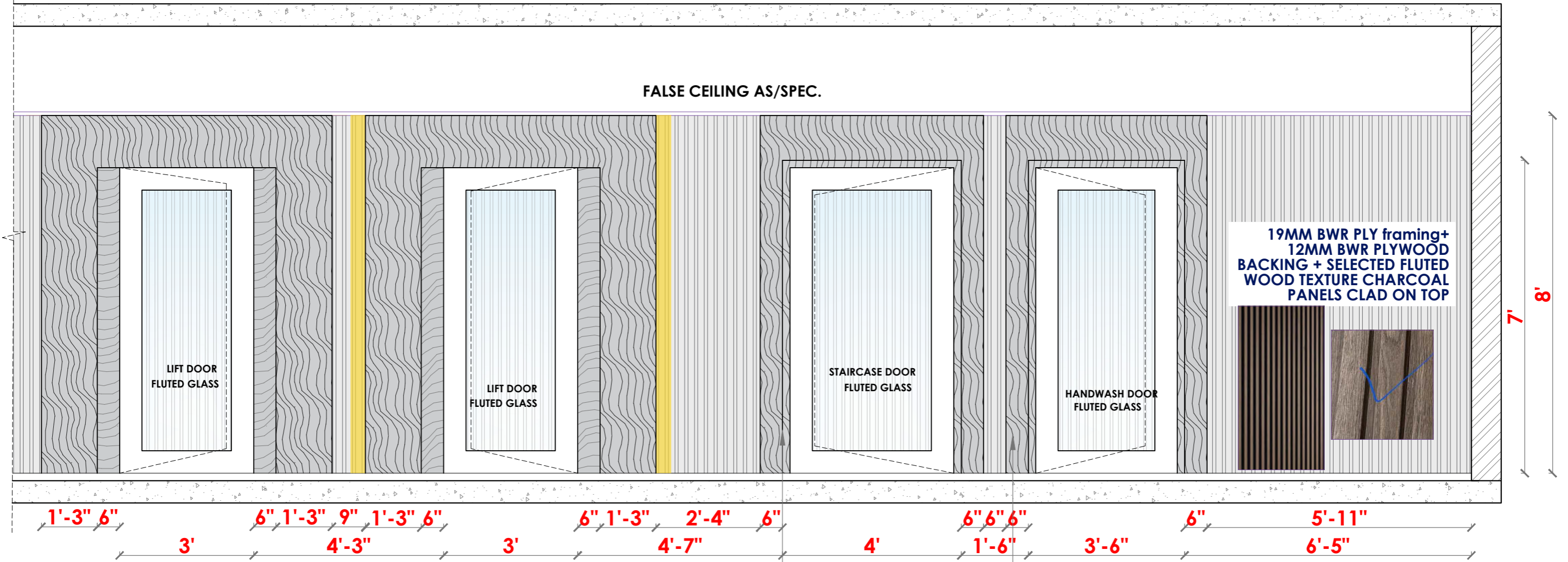


N1 HALL ELEVATION A



N1 HALL ELEVATION B AND C

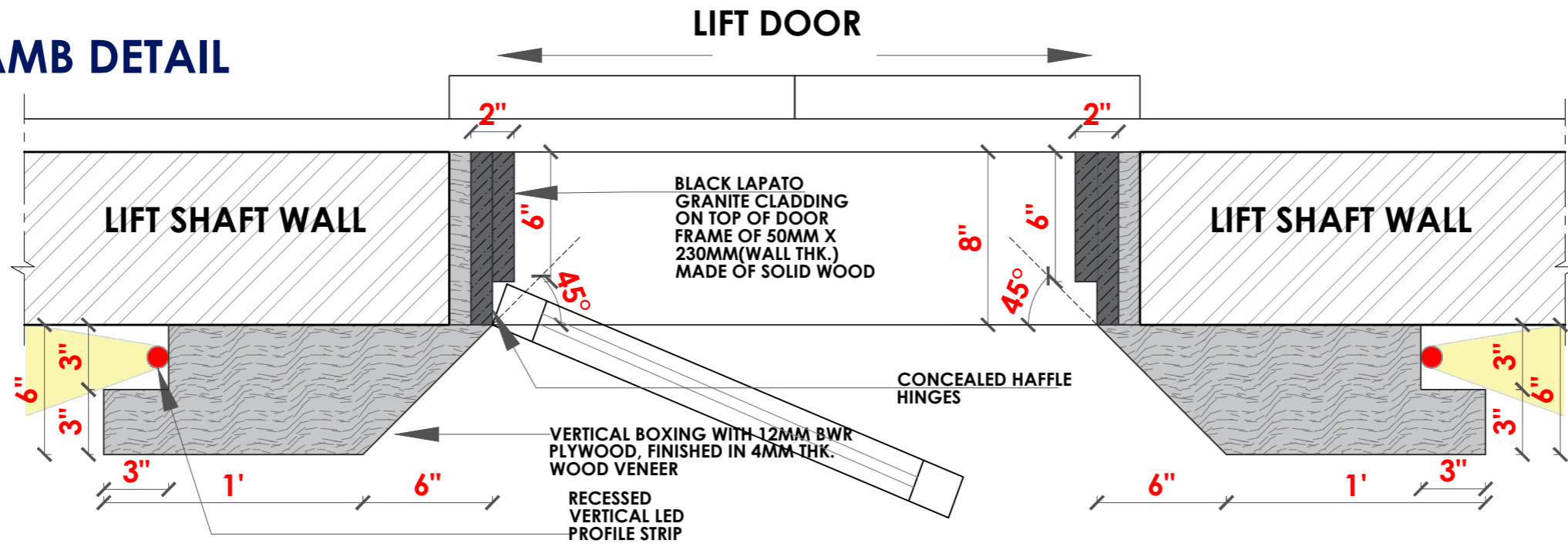


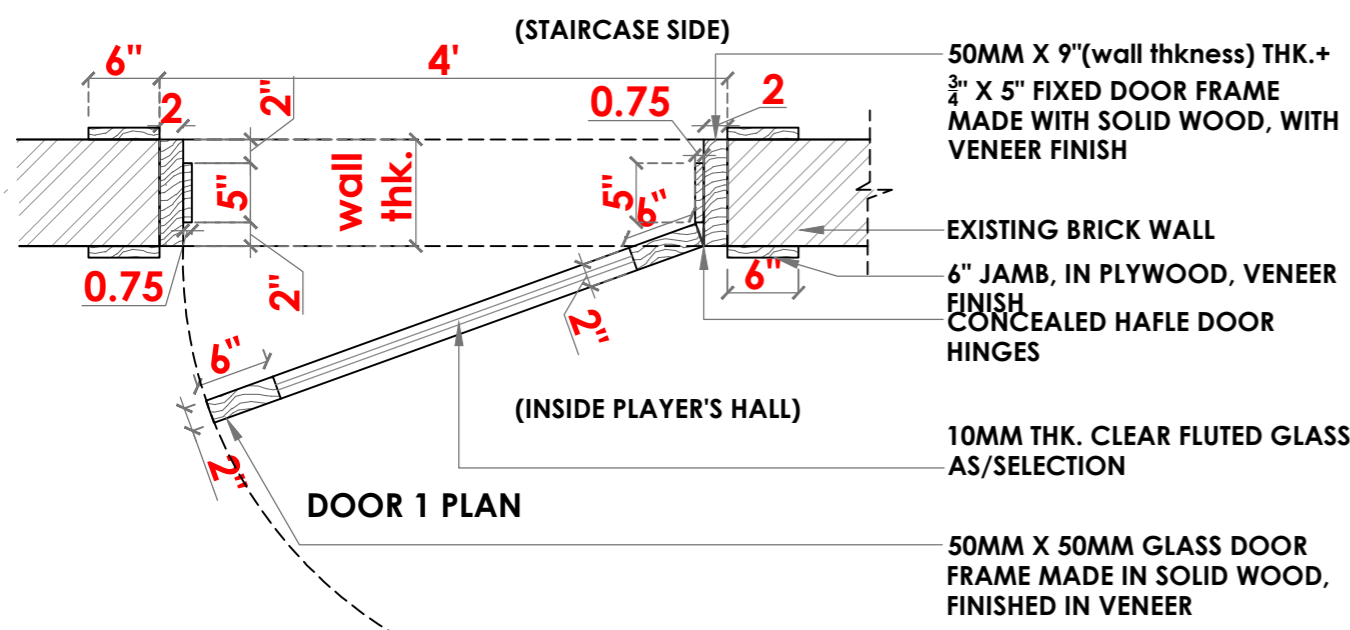
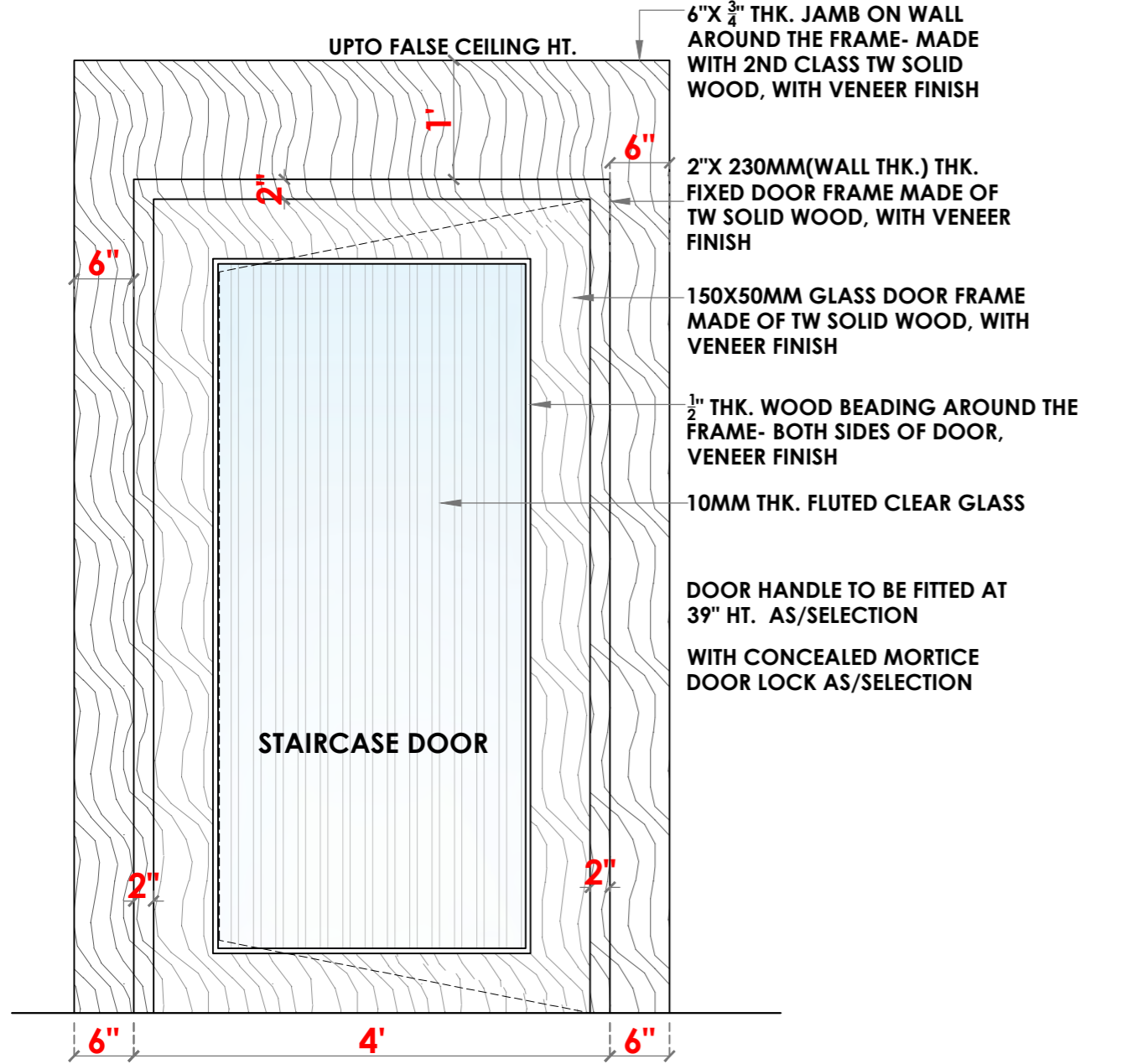


N1 HALL LIFT WALL ELEVATION D

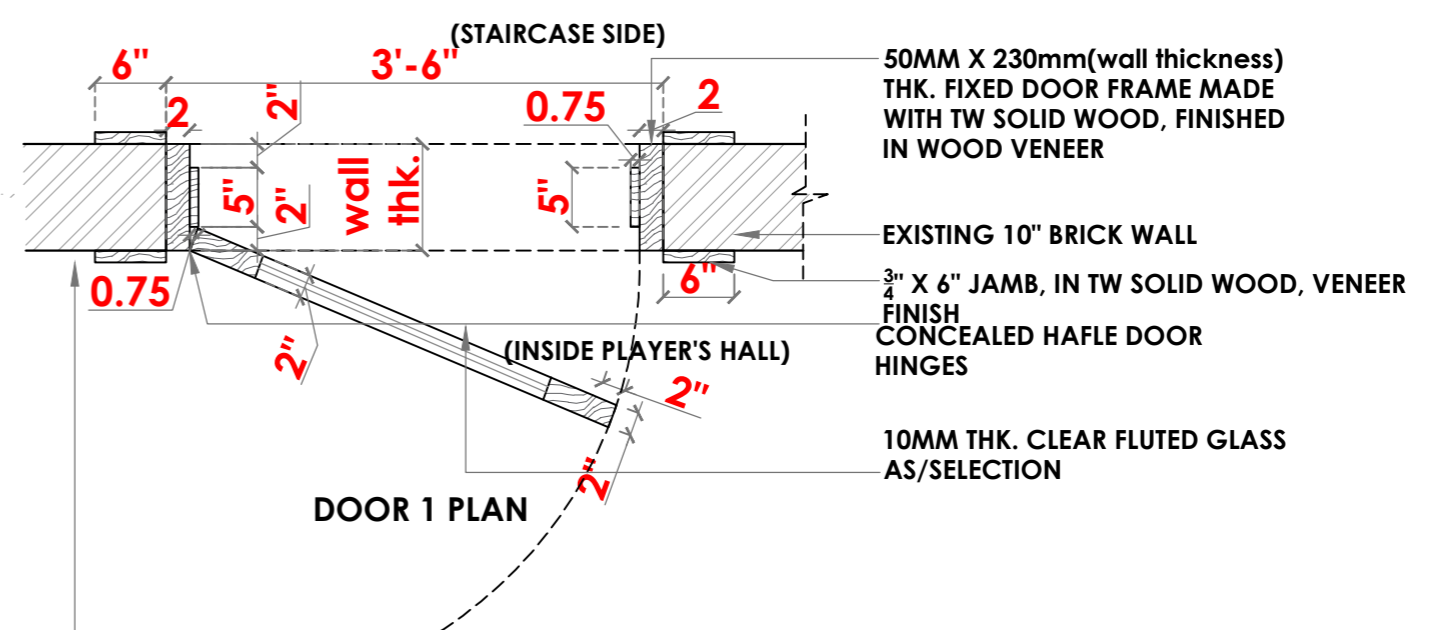
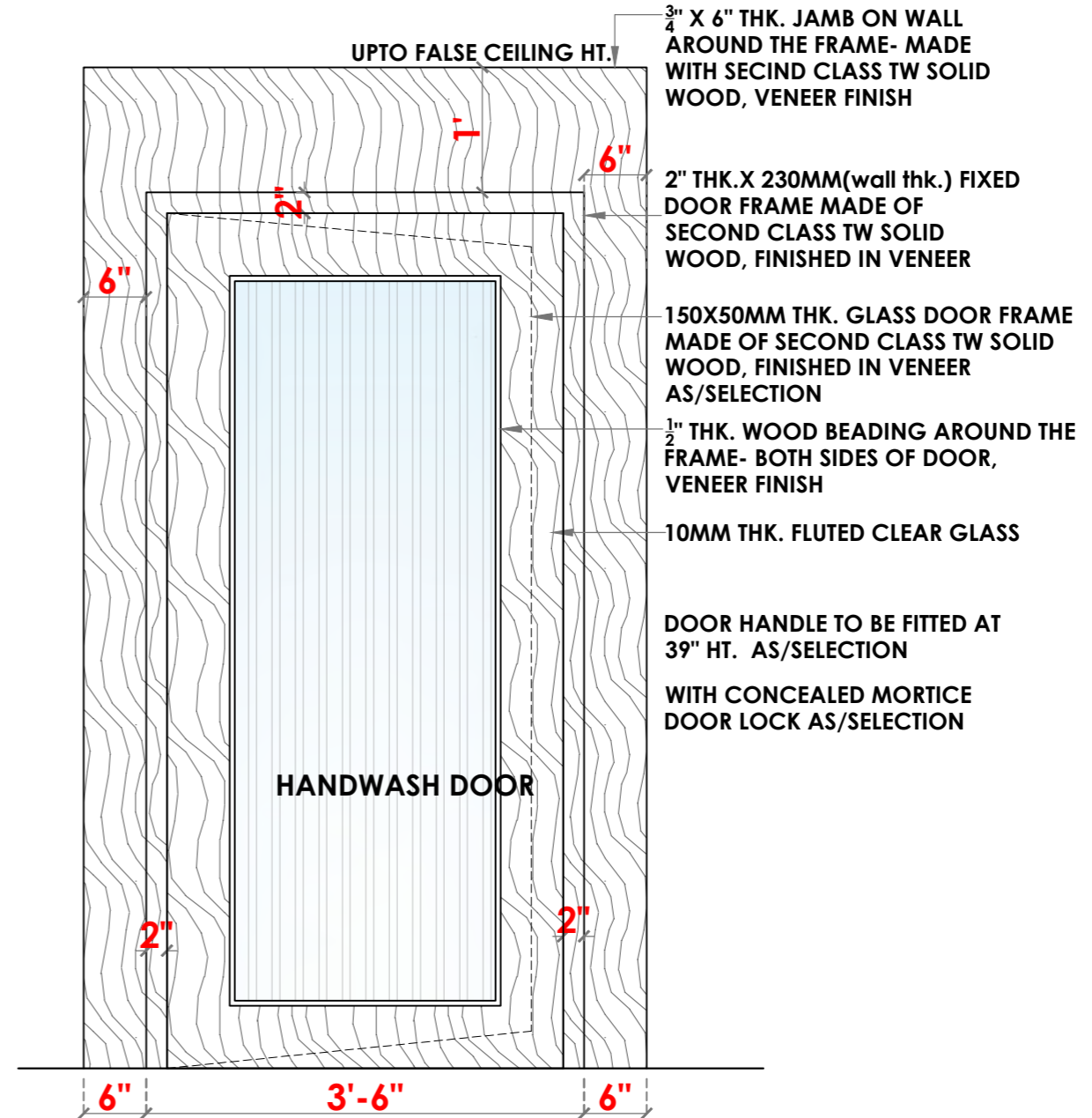
SOLID WOOD DOOR FRAME. OF TYPE- SINGLE SHUTTER SINGLE HUNG FRAME MADE OF SECTION SIZE 230(WALL THK.) X 50MM (FINISHED SIZE). ADDITIONAL 3/4" X 6" THK. DOOR JAMB (ARCHITRAVE) FIXED ON TOP OF FRAME. JAMBS TO BE FINISHED IN 6MM THK. WOODEN VENEER SHEET.

LIFT DOOR JAMB DETAIL





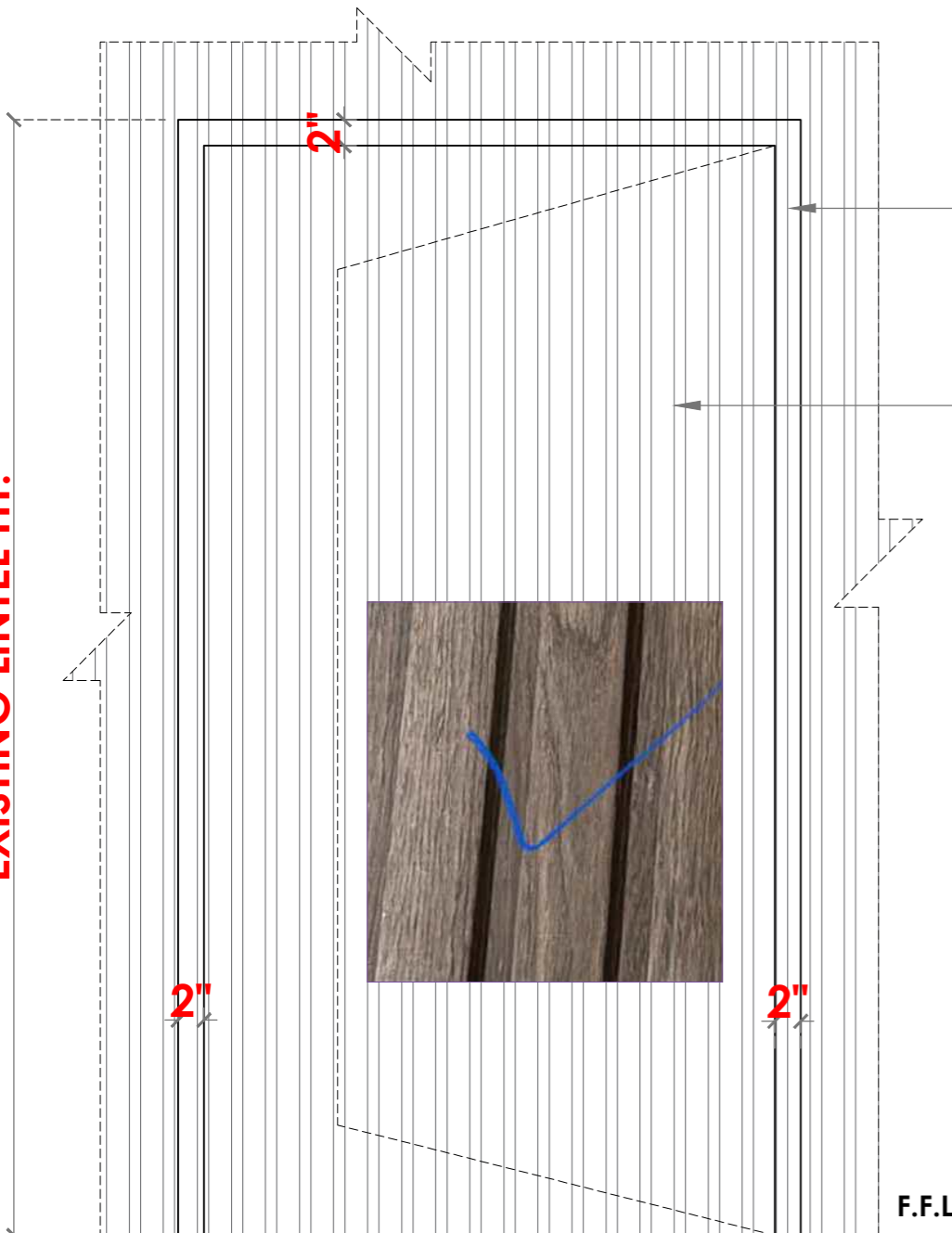
STAIRCASE DOOR DETAIL



HANDWASH DOOR



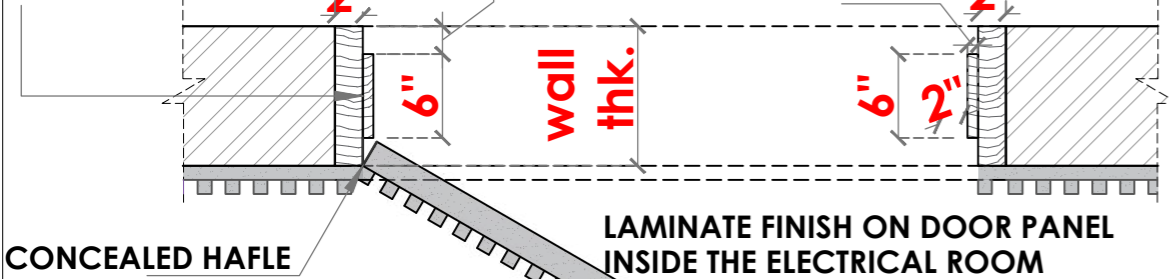
EXISTING LINTEL HT.

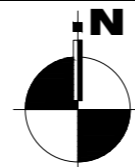
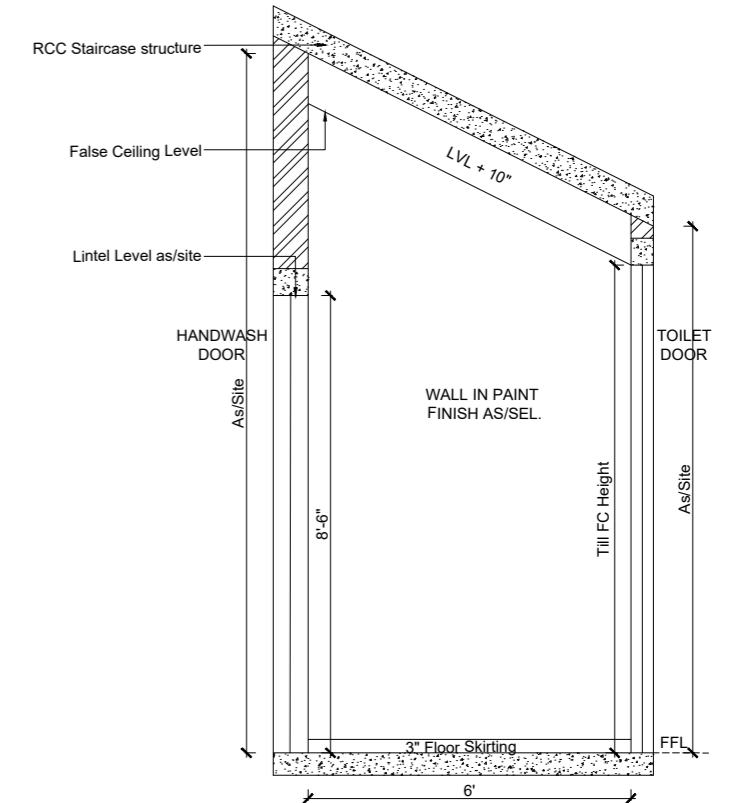
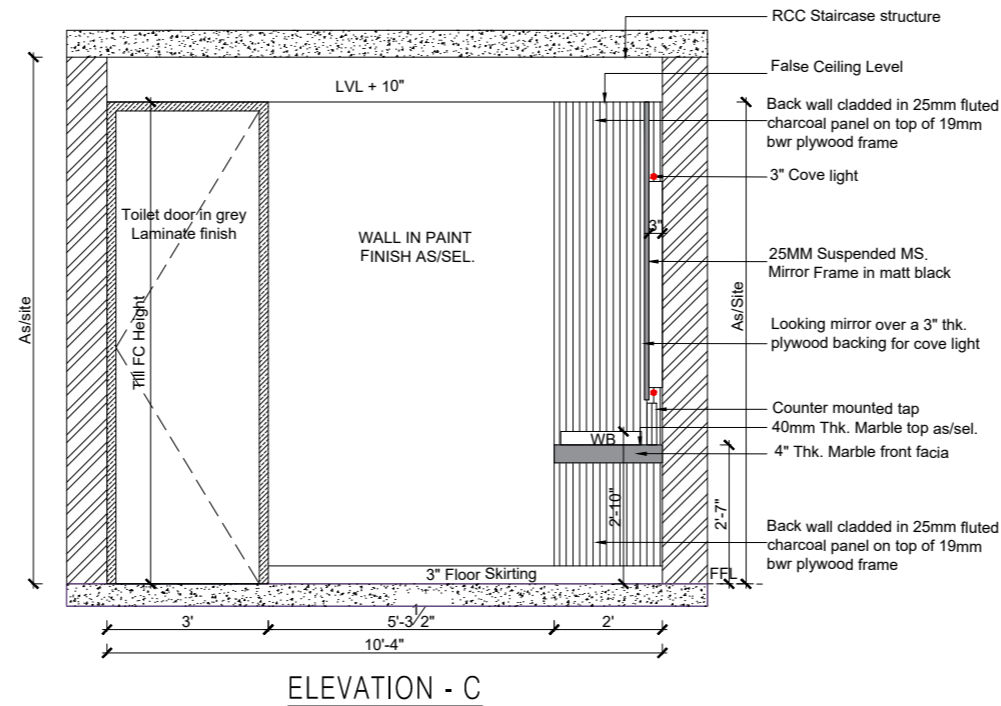
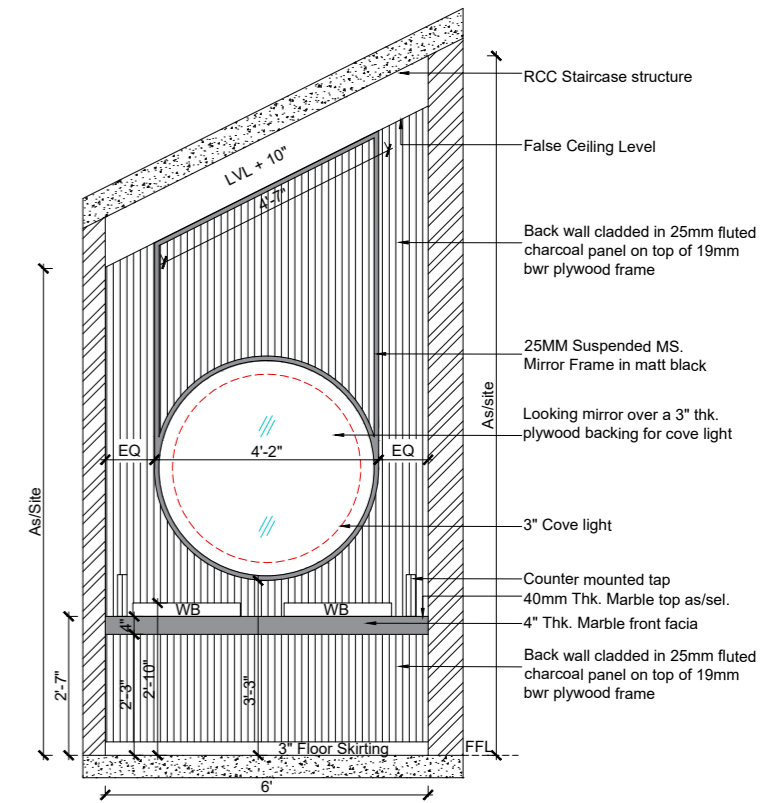
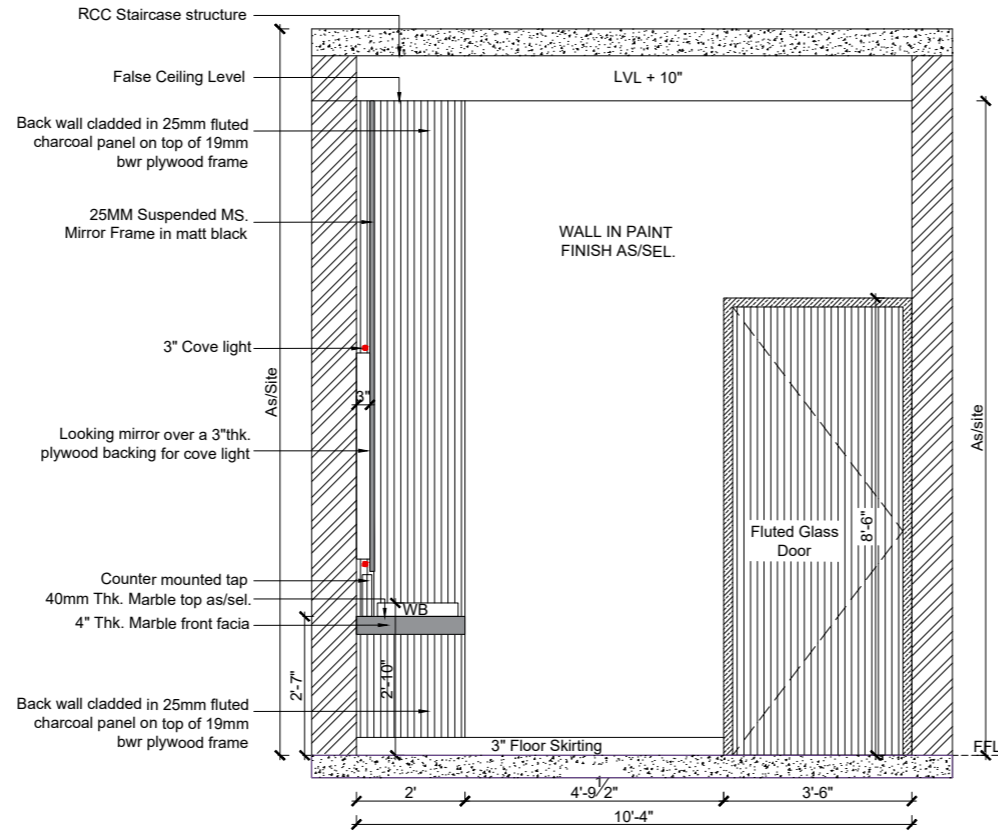
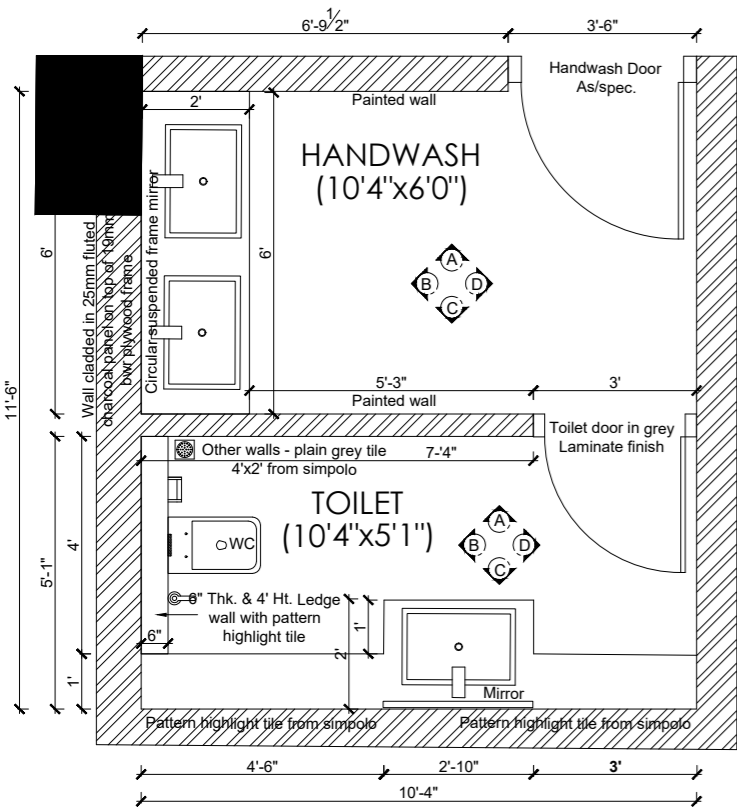


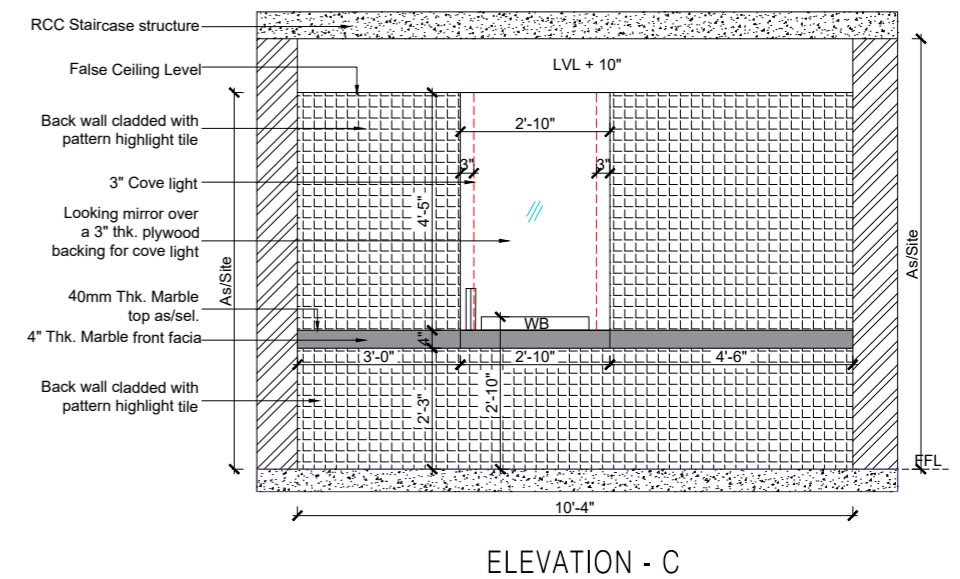
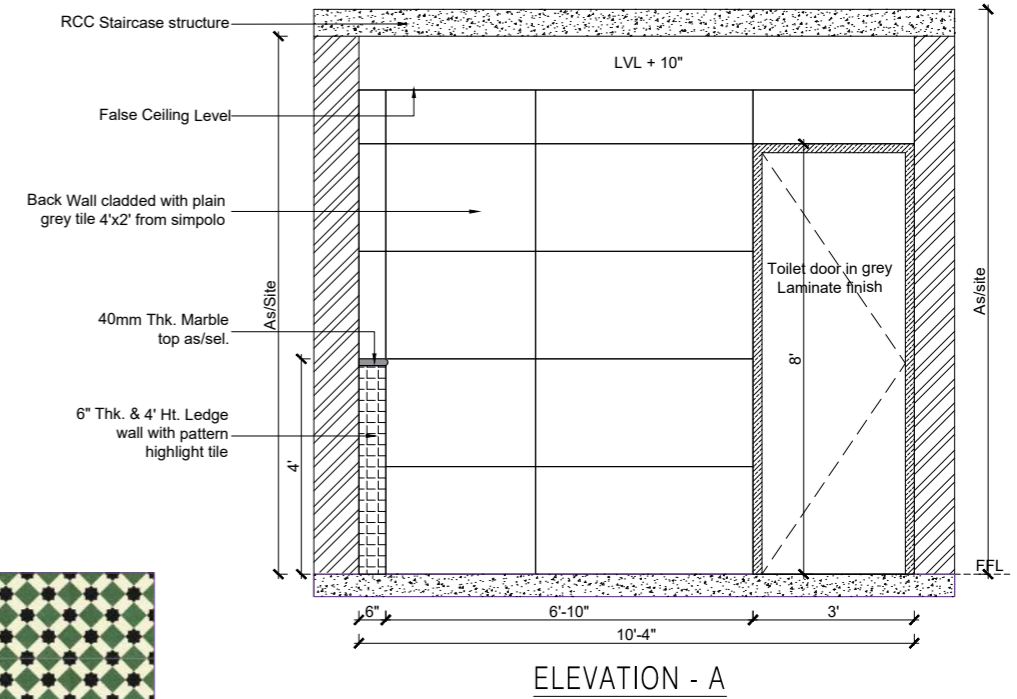
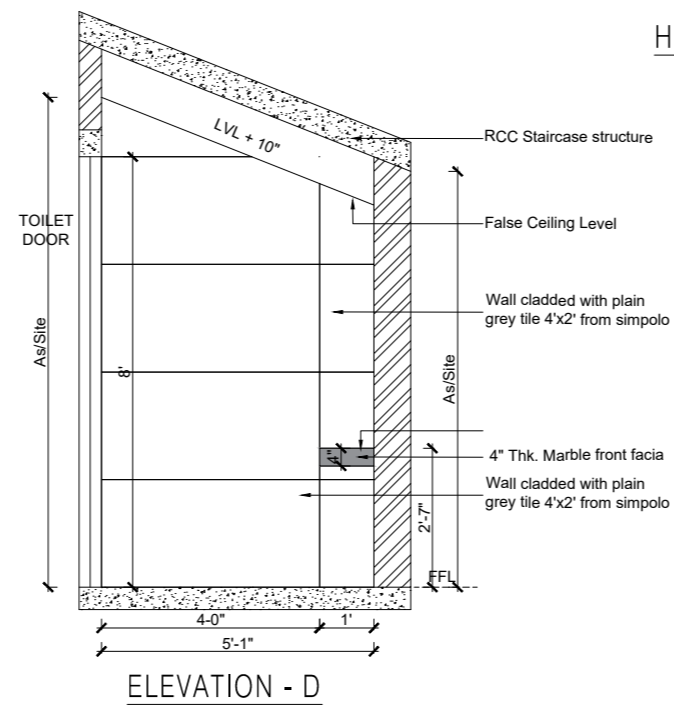
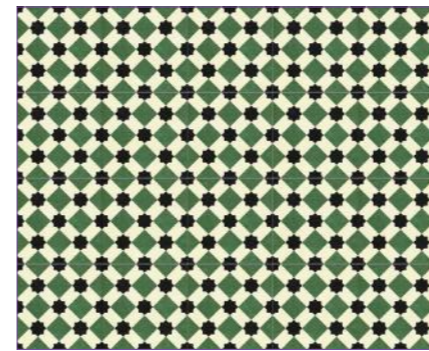
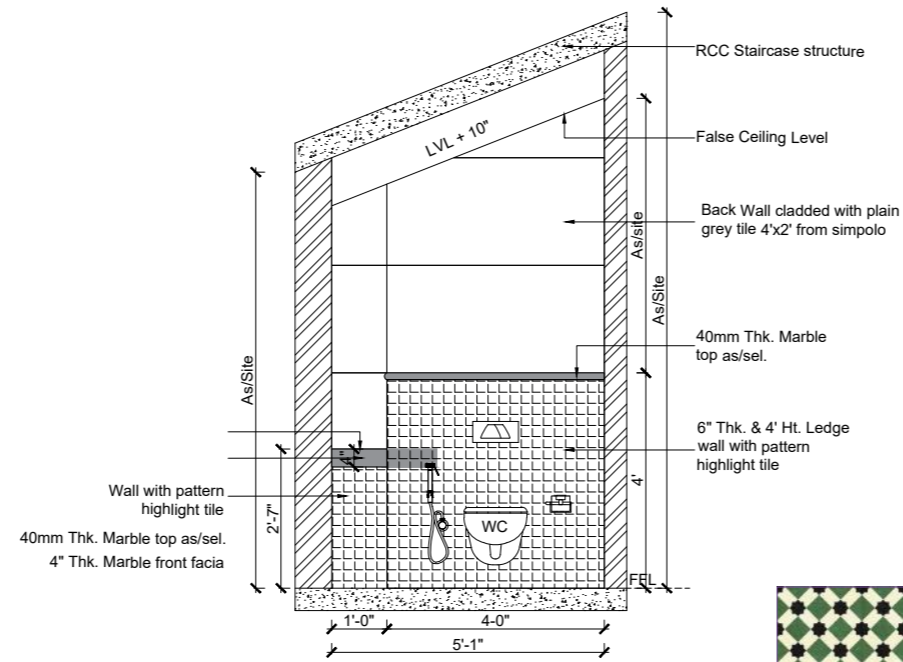
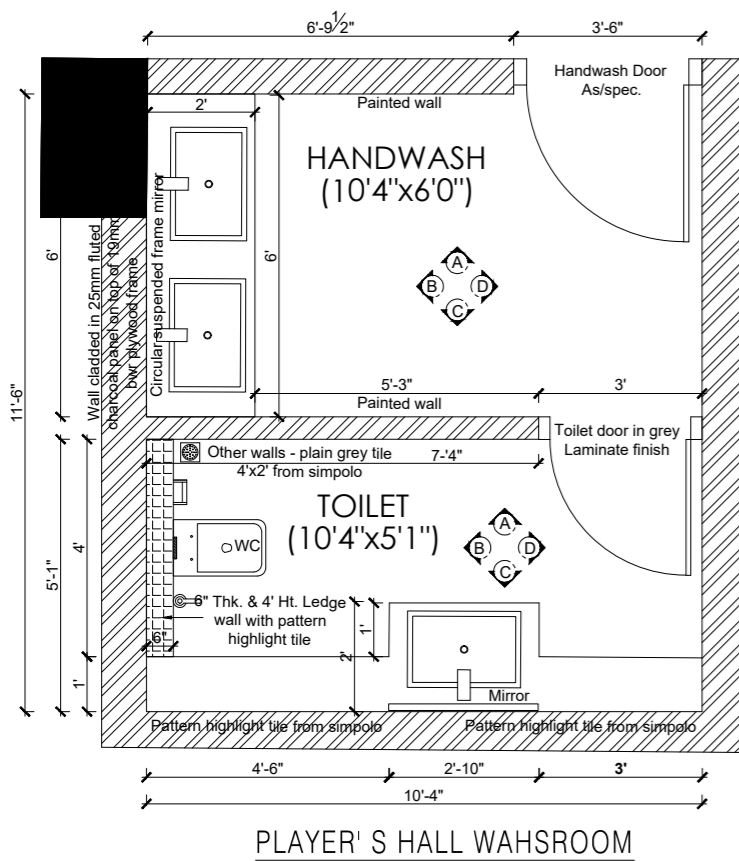
50 X 230MM SOLIDWOOD FIXED DOOR FRAME + FLUTED WOOD TEXTURE PANEL CLADDING CONTINUE ON THE FRAME FOR SEAMLESS FLUSHED LOOK

4' ELEVATION

4'

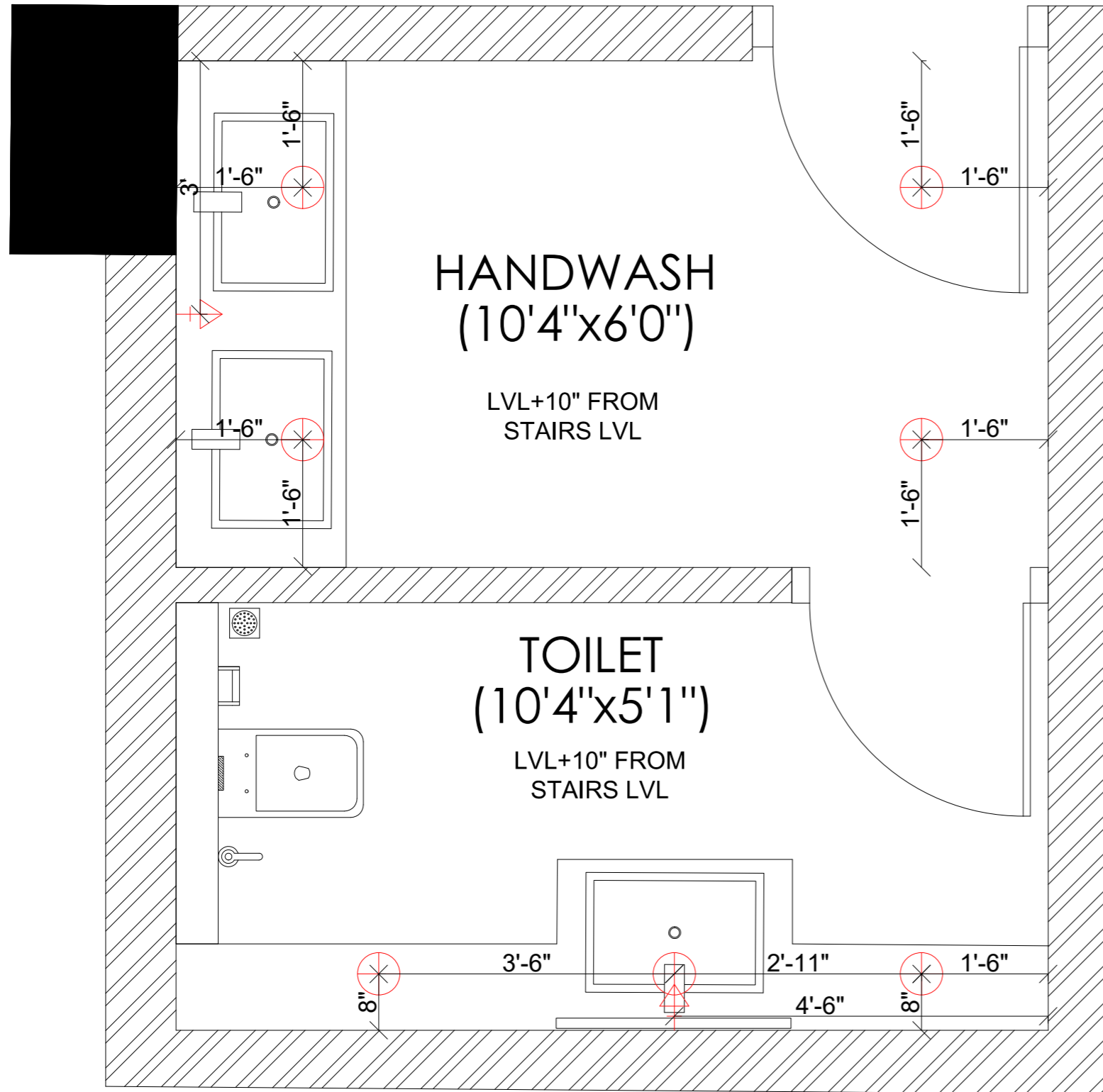








**MANSI DESHPANDE DESIGN
PROPOSED PLAYER'S HALL
COUNTRY CRICKET CLUB - RANCHI**



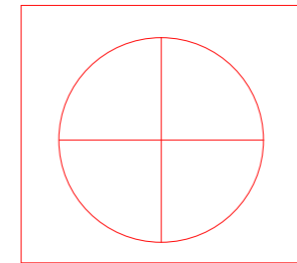
HANDWASH
(10'4"x6'0")

LVL+10" FROM
STAIRS LVL

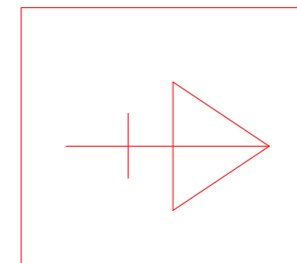
TOILET
(10'4"x5'1")

LVL+10" FROM
STAIRS LVL

LIGHTING LAYOUT

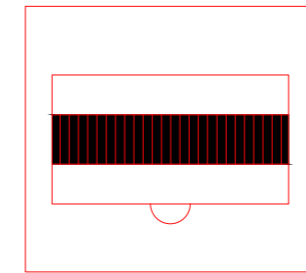
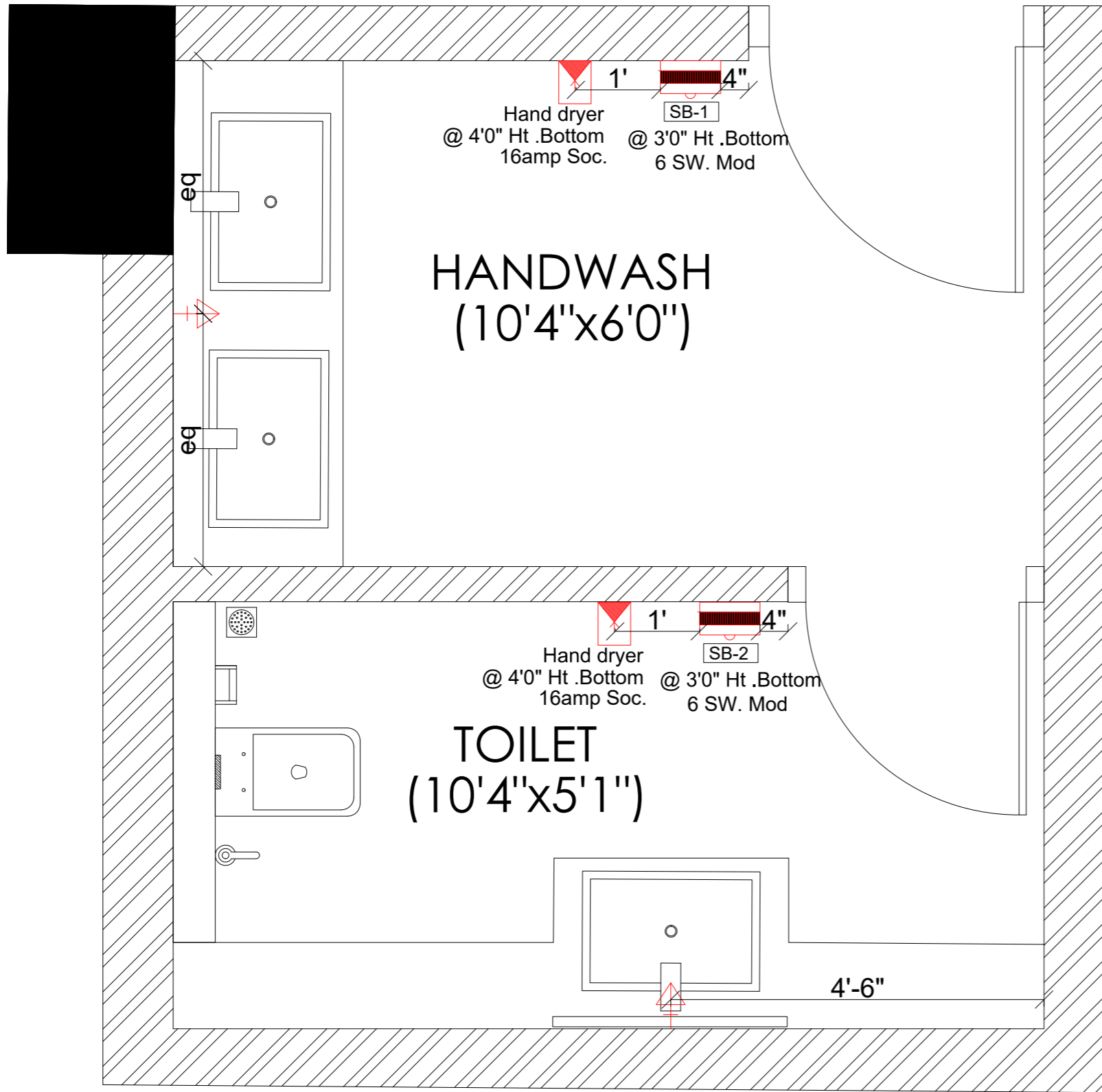


COB Light (8W)

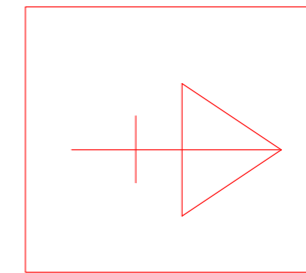


Wall Light

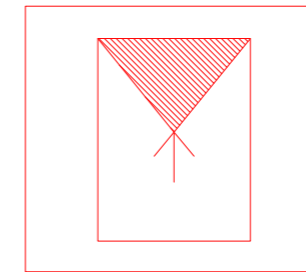




Switch board



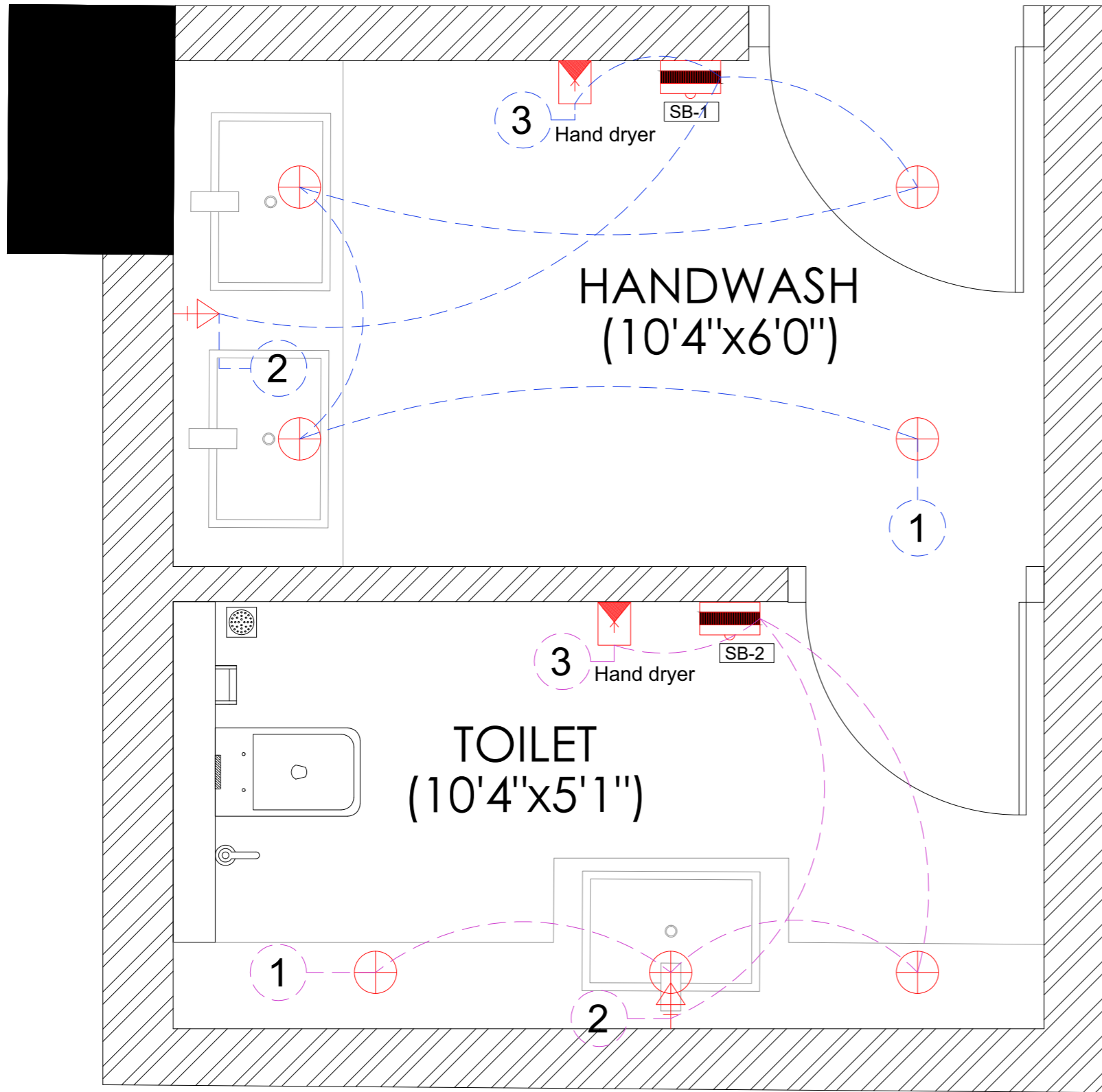
Wall Light



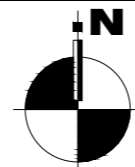
16amp socket

WALL ELECTRICAL LAYOUT





ELECTRICAL LOOPING LAYOUT





MANSI DESHPANDE DESIGN CONSULTANCY
PROPOSED PLAYER'S HALL
COUNTRY CRICKET CLUB - RANCHI



MANSI DESHPANDE DESIGN CONSULTANCY
PROPOSED PLAYER'S HALL
COUNTRY CRICKET CLUB - RANCHI