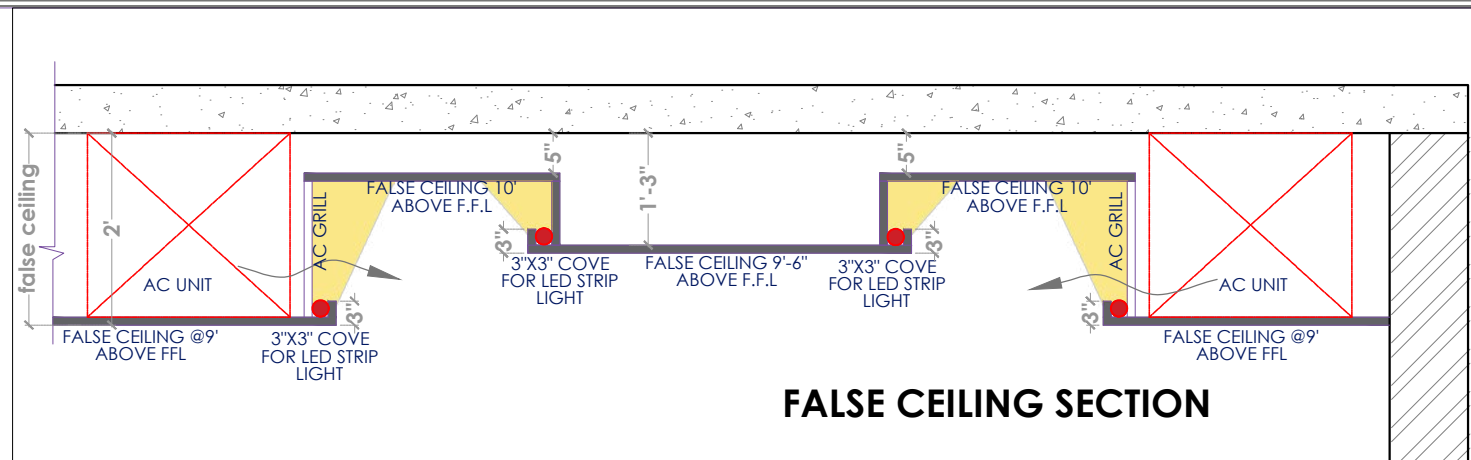
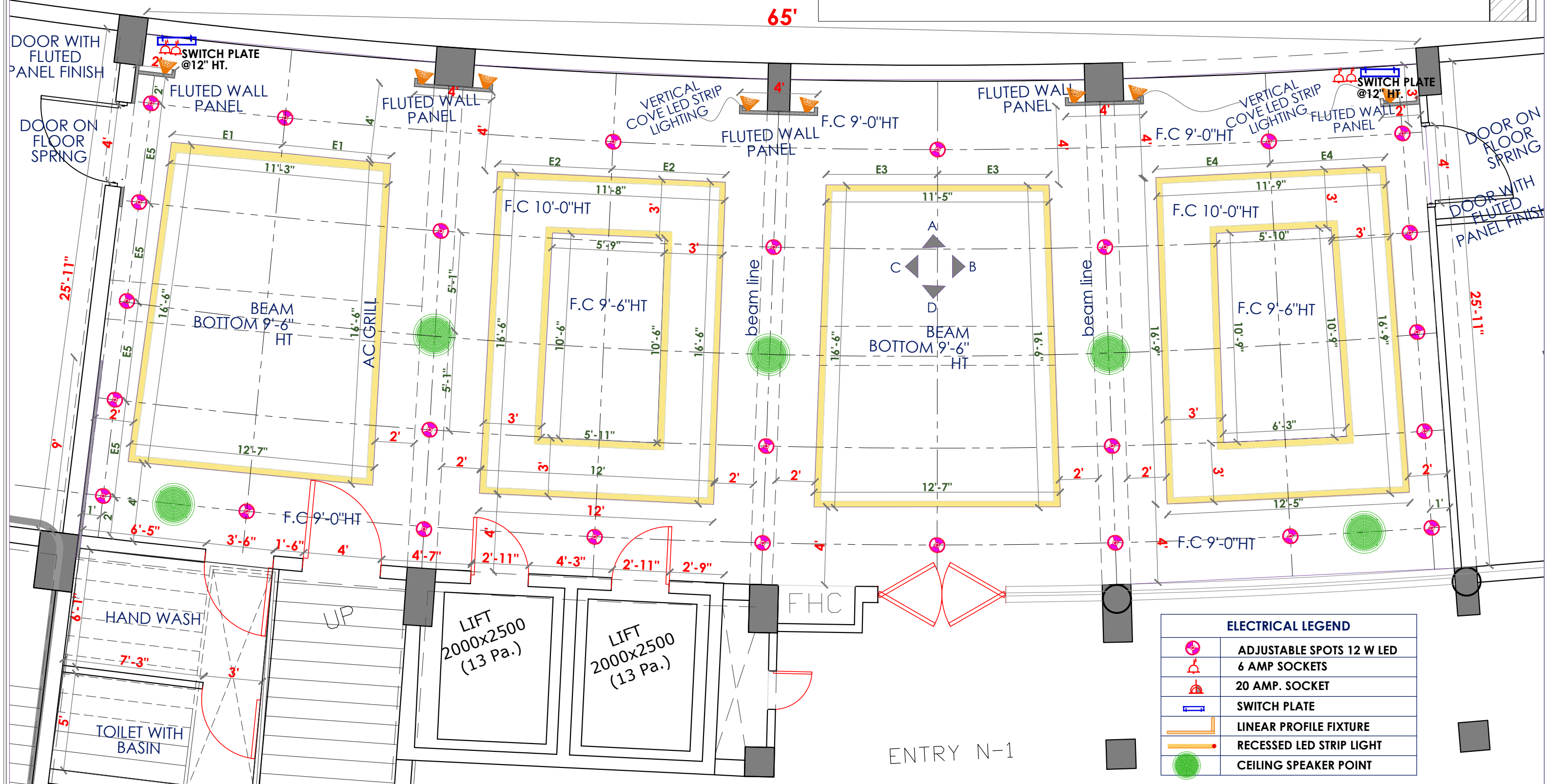


# KITCHEN

65'



FALSE CEILING SECTION

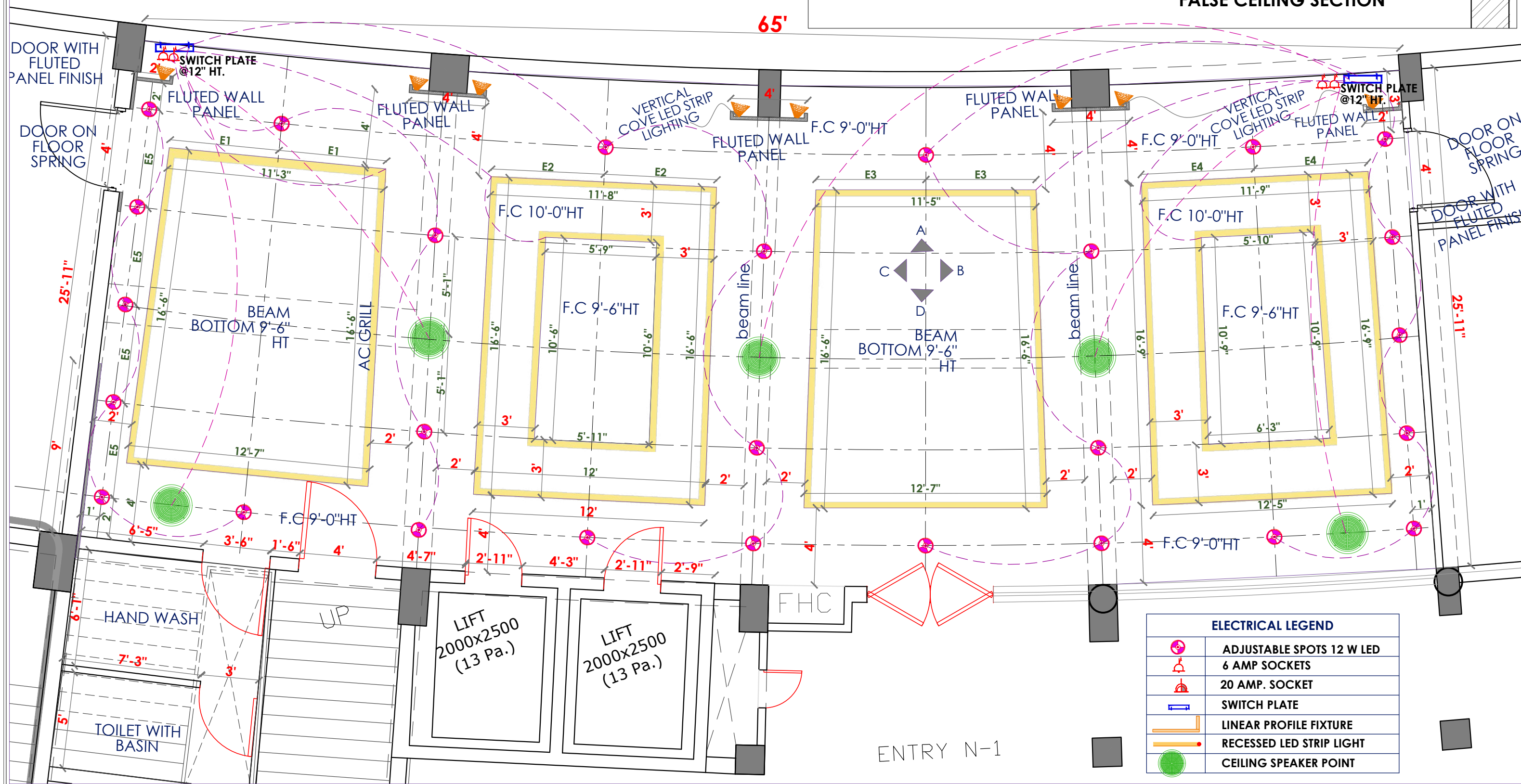
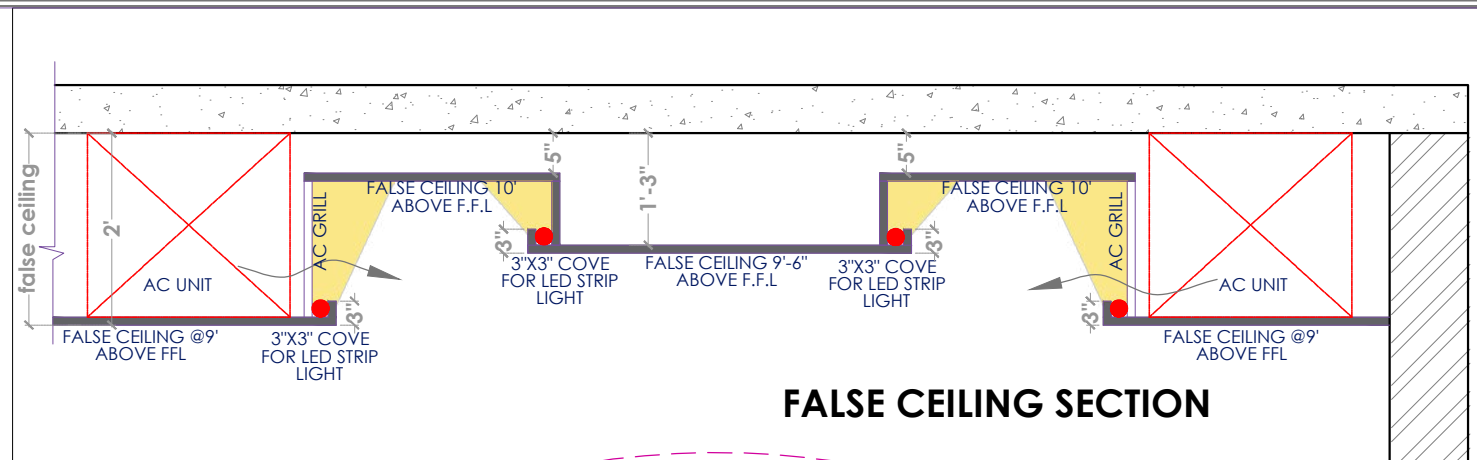


ELECTRICAL LEGEND	
	ADJUSTABLE SPOTS 12 W LED
	6 AMP SOCKETS
	20 AMP. SOCKET
	SWITCH PLATE
	LINEAR PROFILE FIXTURE
	RECESSED LED STRIP LIGHT
	CEILING SPEAKER POINT



# KITCHEN

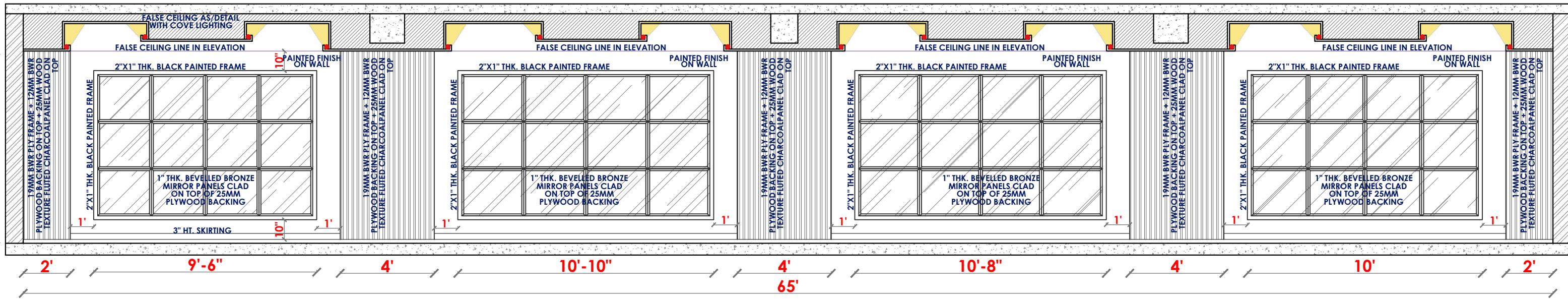
65'



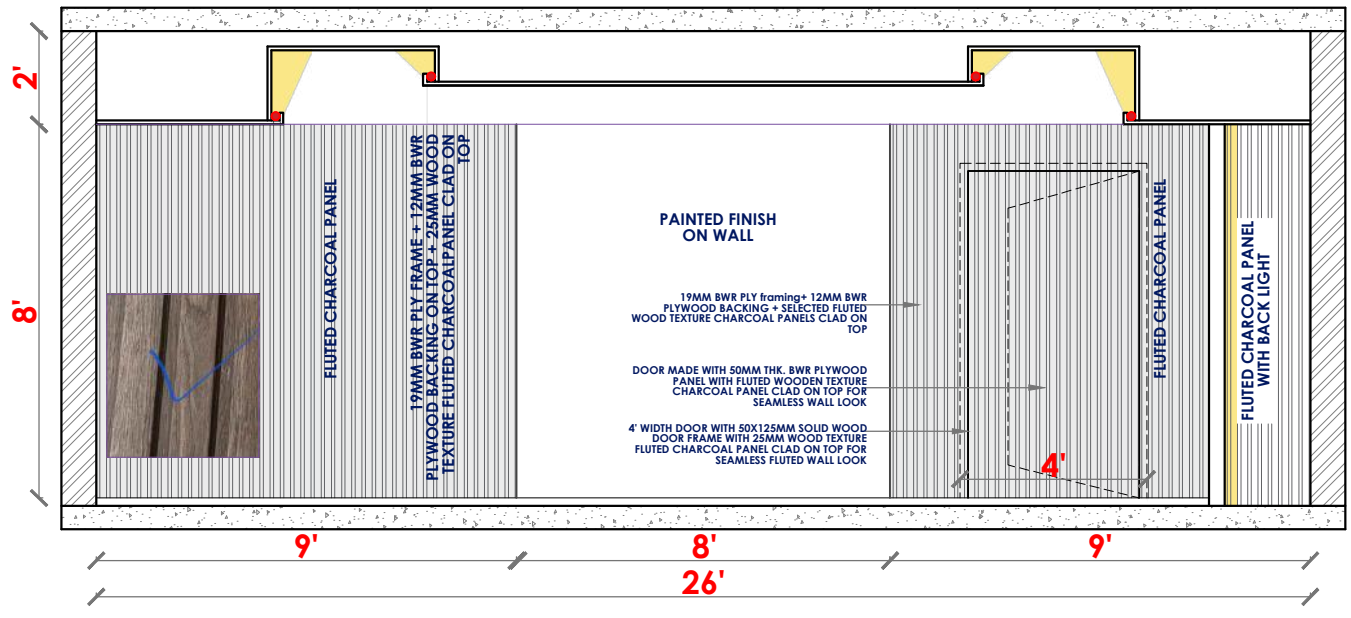
ELECTRICAL LEGEND	
	ADJUSTABLE SPOTS 12 W LED
	6 AMP SOCKETS
	20 AMP. SOCKET
	SWITCH PLATE
	LINEAR PROFILE FIXTURE
	RECESSED LED STRIP LIGHT
	CEILING SPEAKER POINT





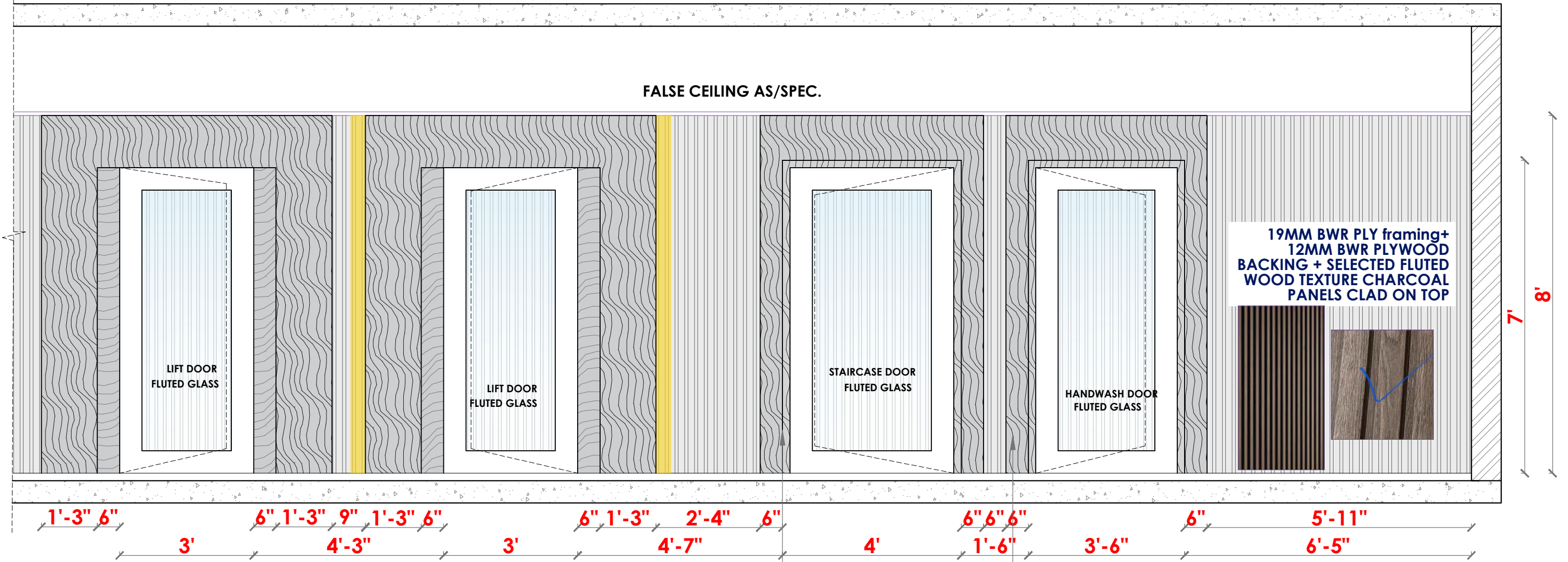


**N1 HALL ELEVATION A**



**N1 HALL ELEVATION B AND C**

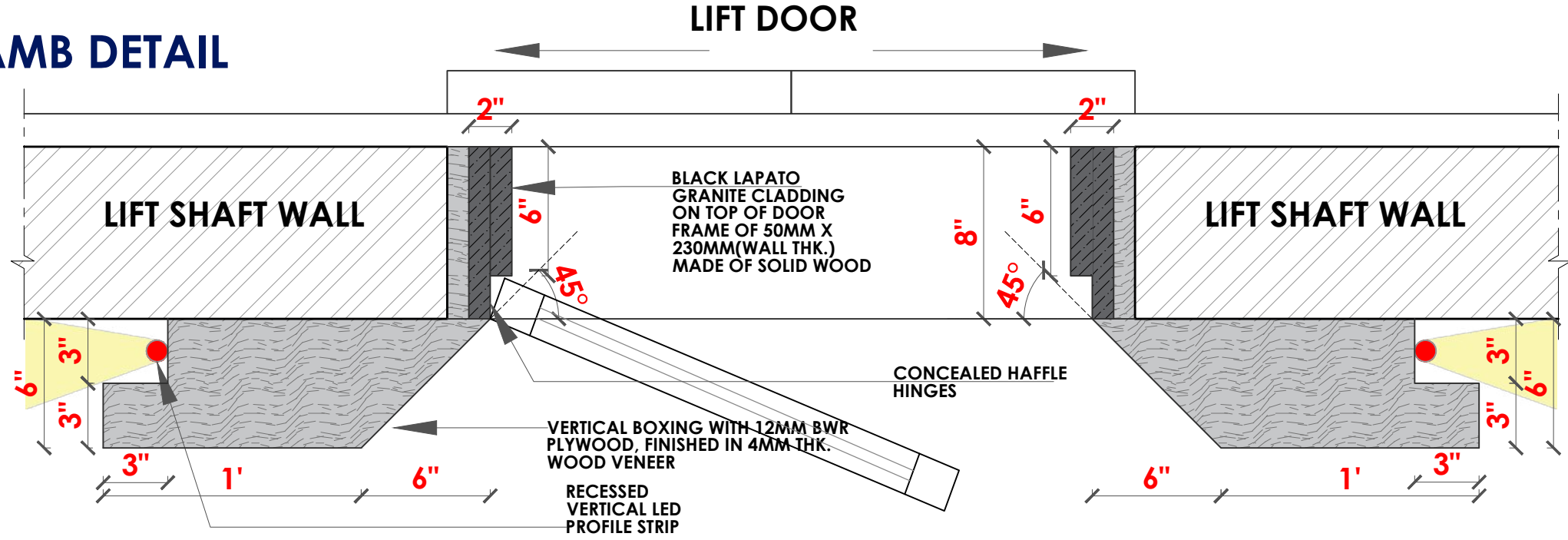


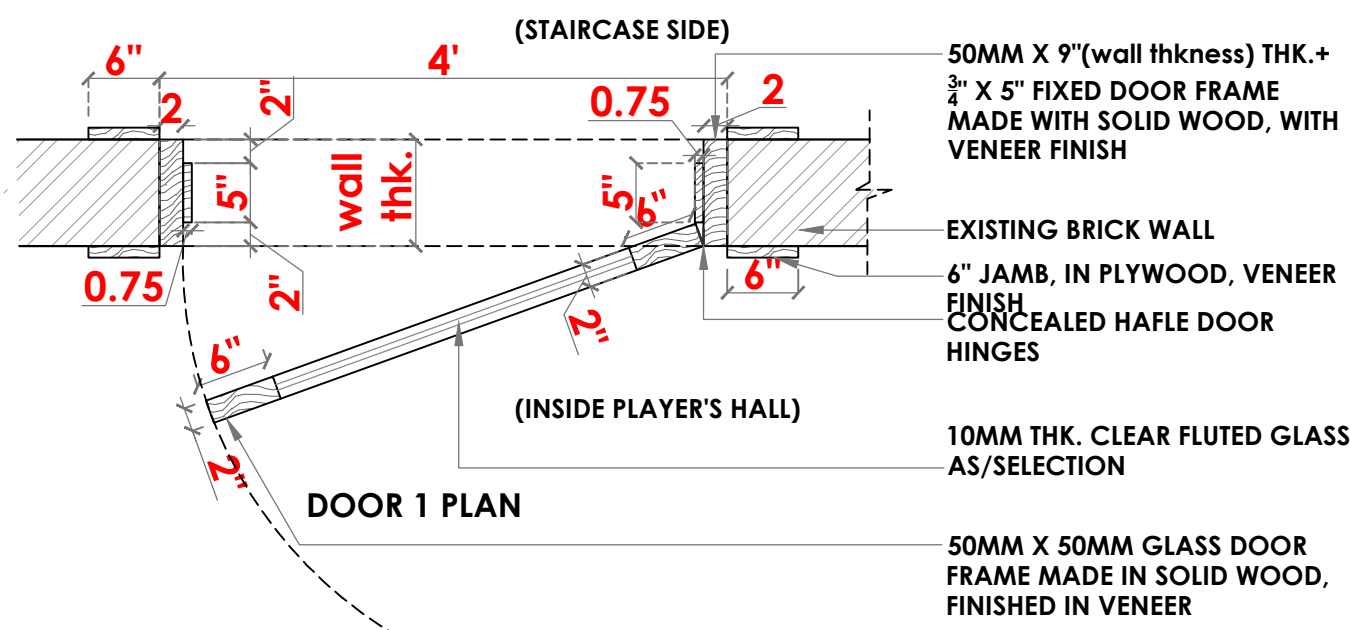
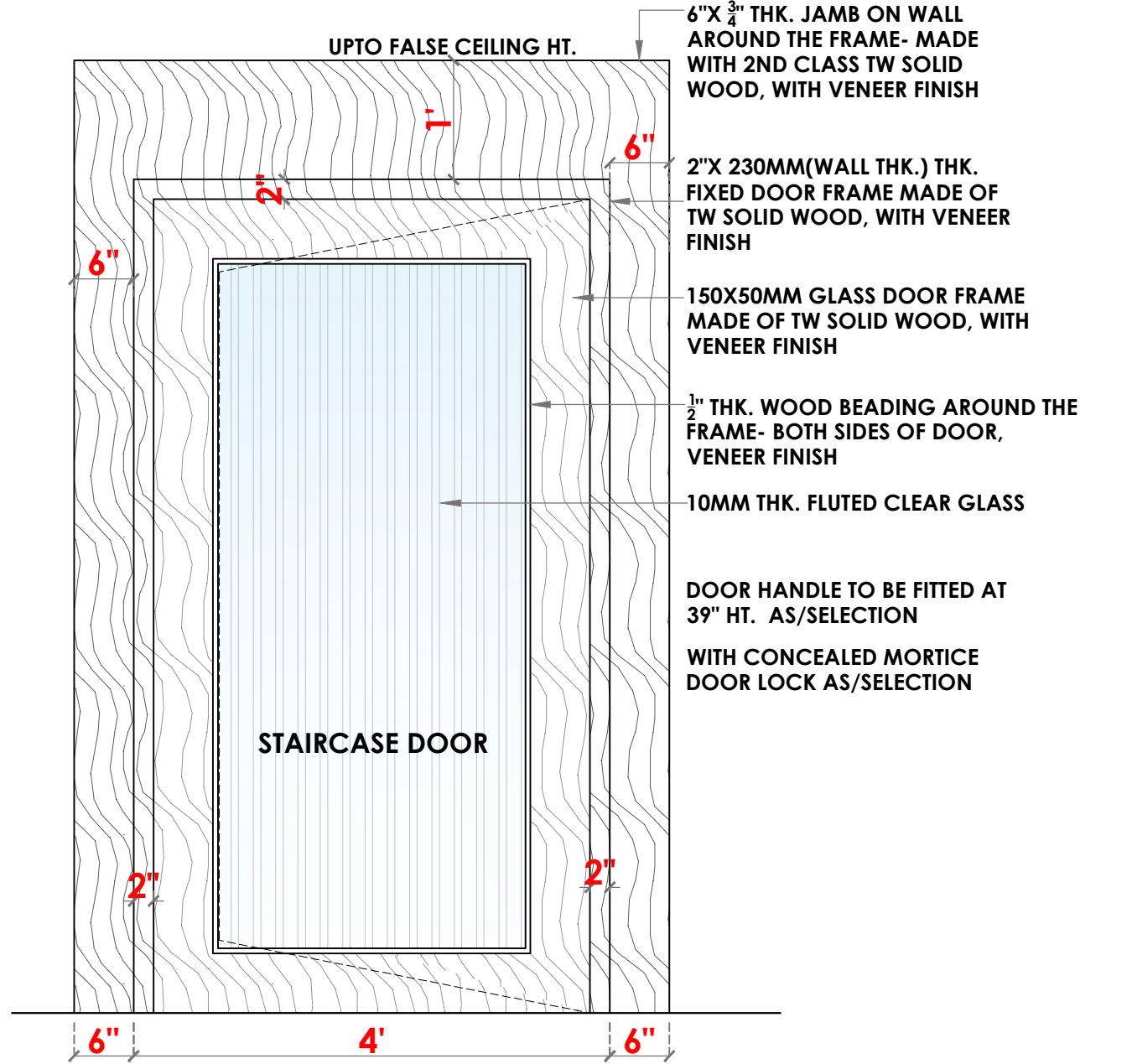


## N1 HALL LIFT WALL ELEVATION D

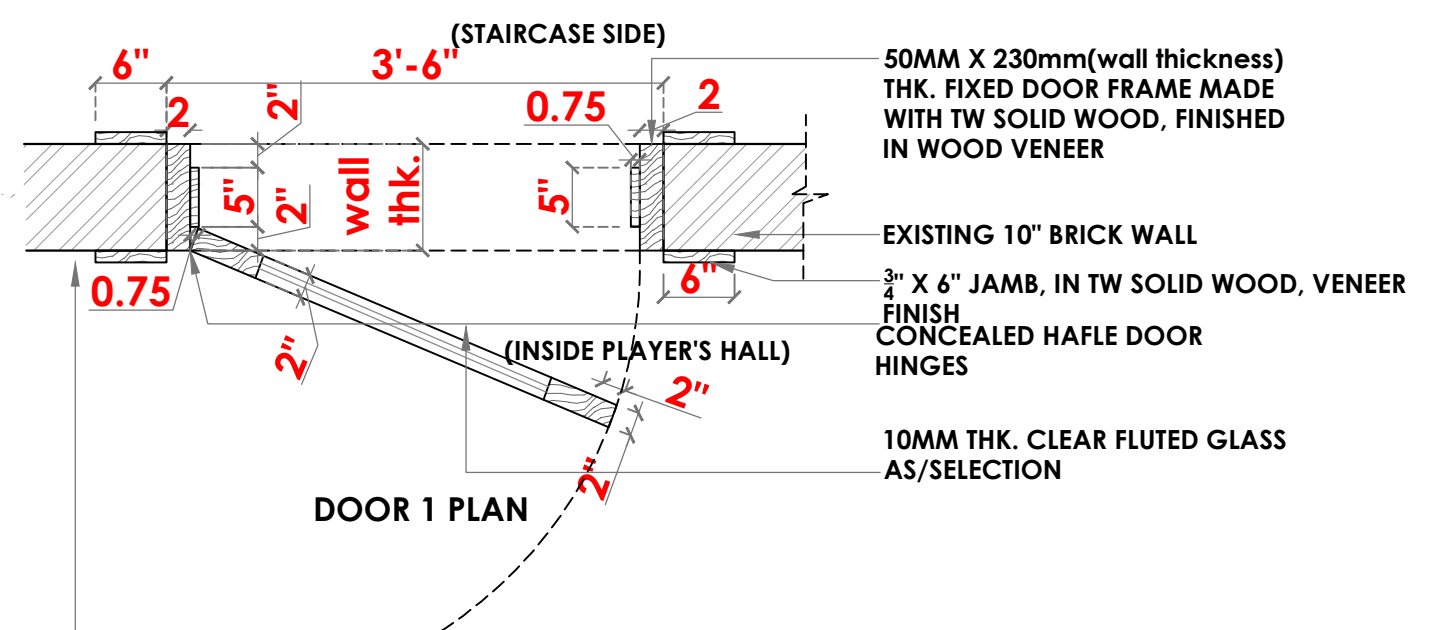
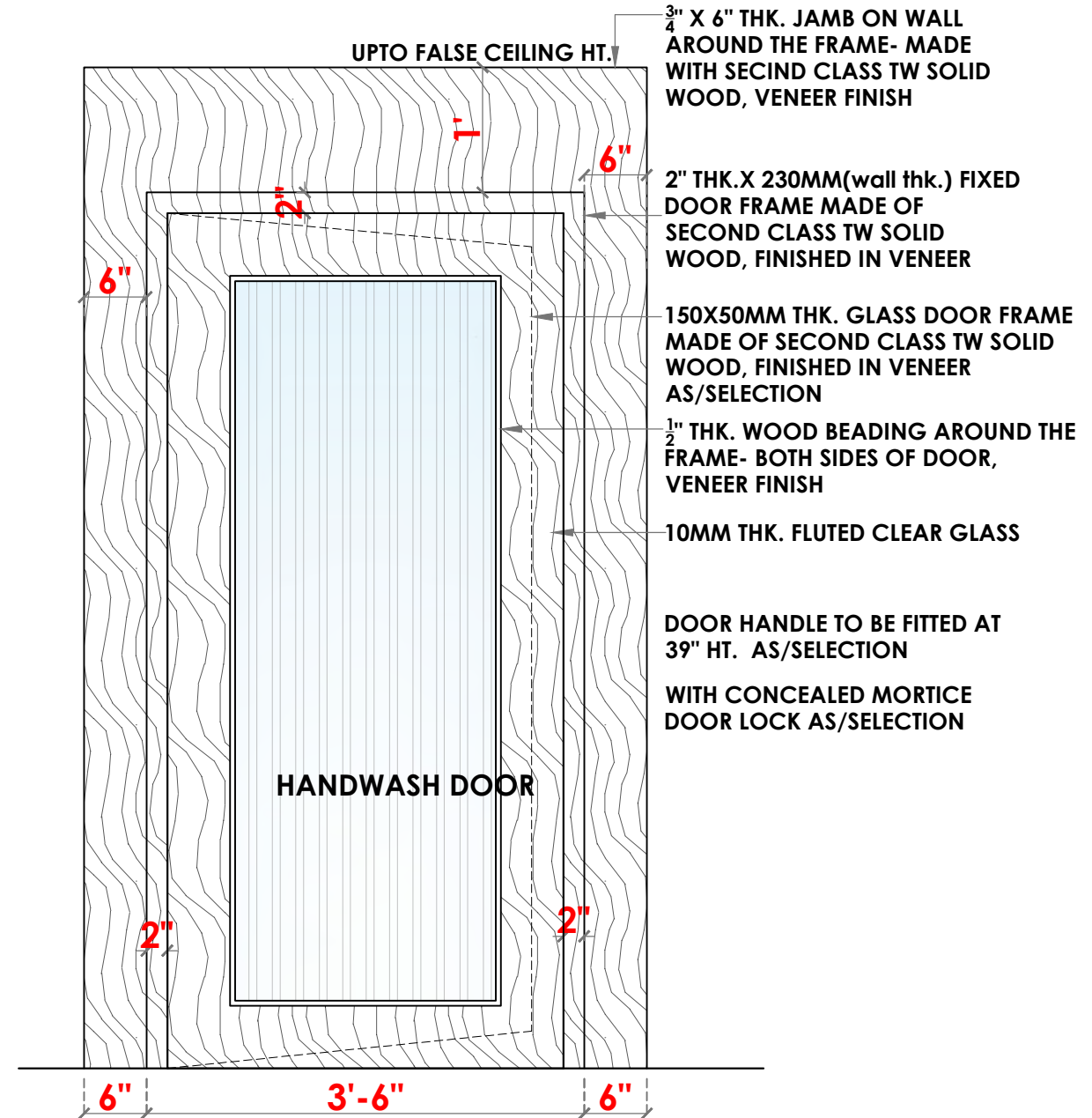
SOLID WOOD DOOR FRAME. OF TYPE- SINGLE SHUTTER SINGLE HUNG FRAME MADE OF SECTION SIZE 230(WALL THK.) X 50MM (FINISHED SIZE). ADDITIONAL 3/4" X 6" THK. DOOR JAMB (ARCHITRAVE) FIXED ON TOP OF FRAME. JAMBS TO BE FINISHED IN 6MM THK. WOODEN VENEER SHEET.

## LIFT DOOR JAMB DETAIL





STAIRCASE DOOR DETAIL

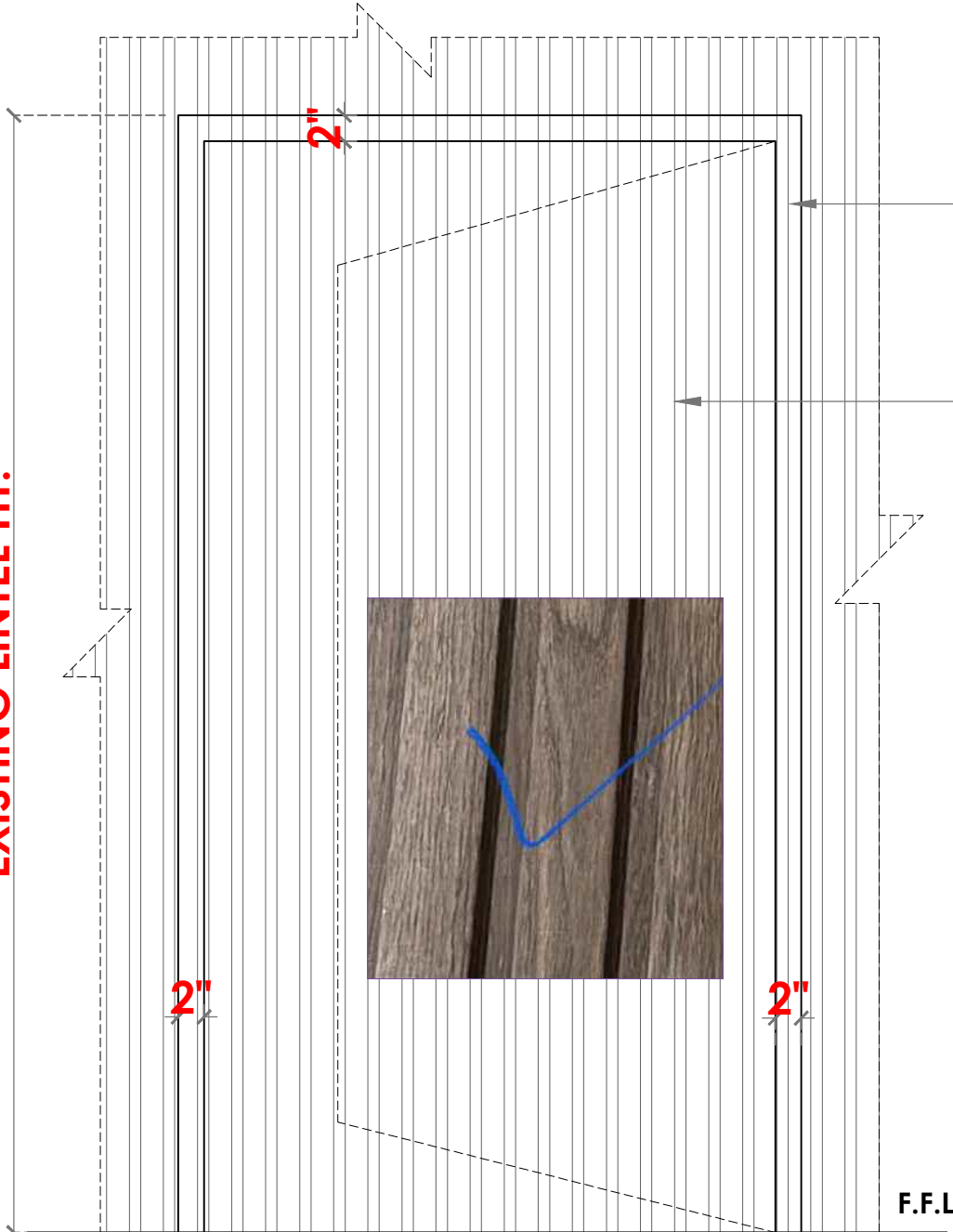


HANDWASH DOOR





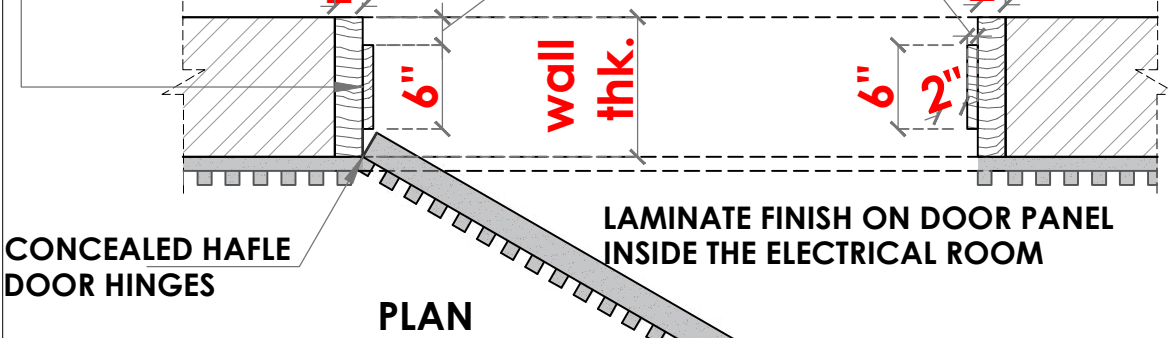
EXISTING LINTEL HT.

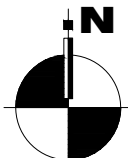
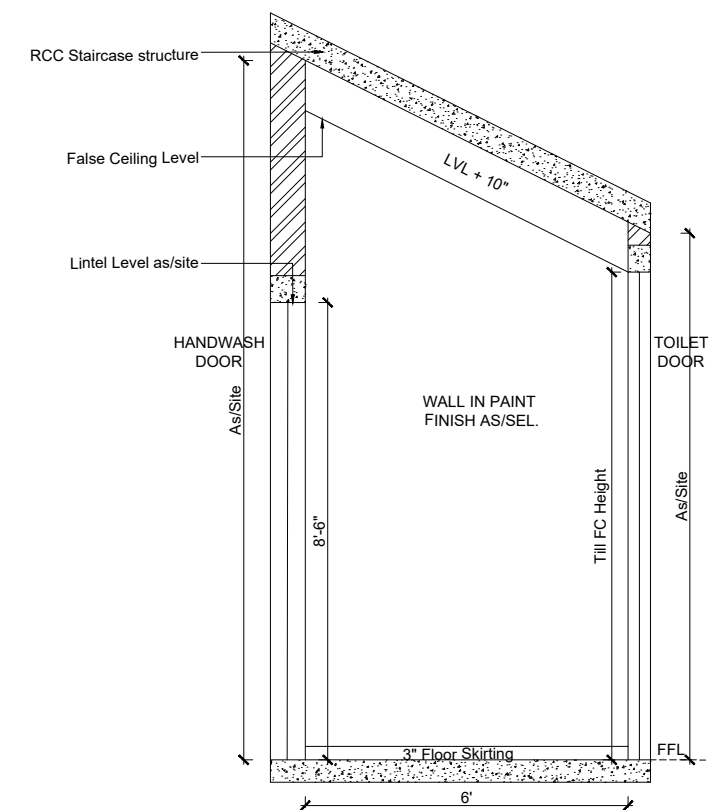
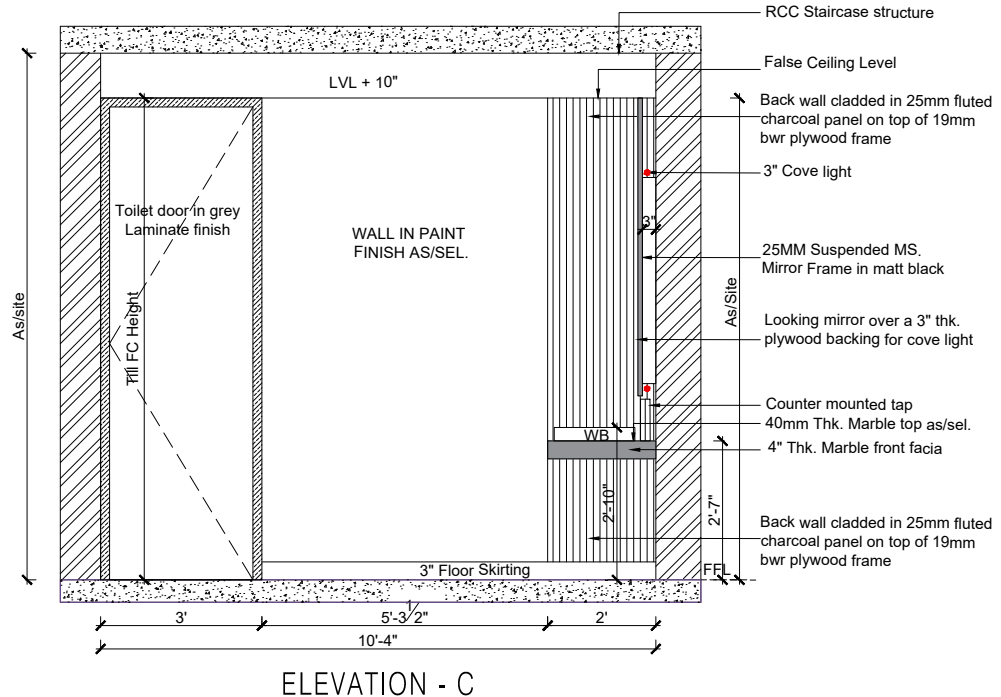
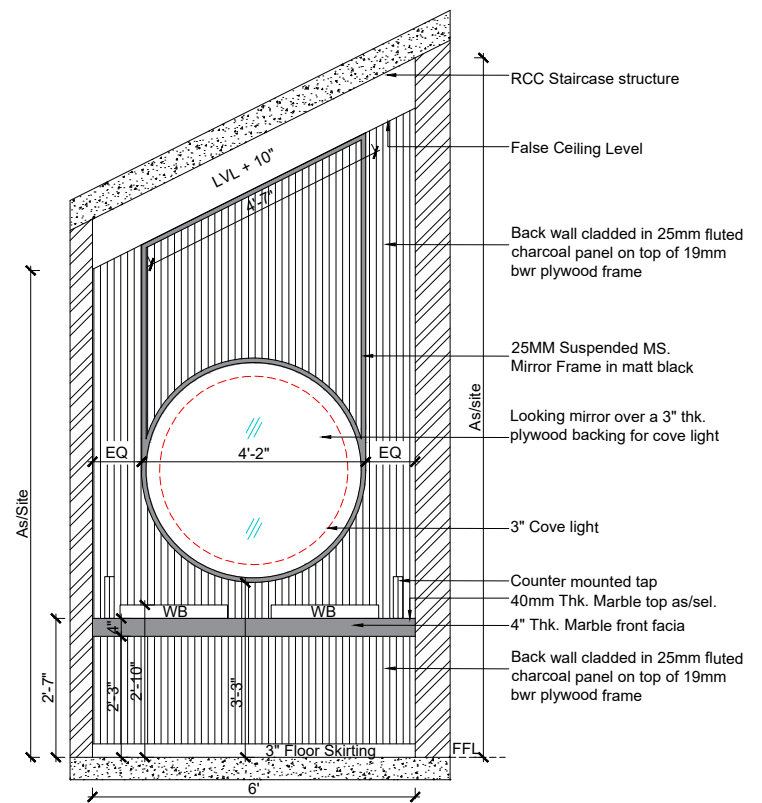
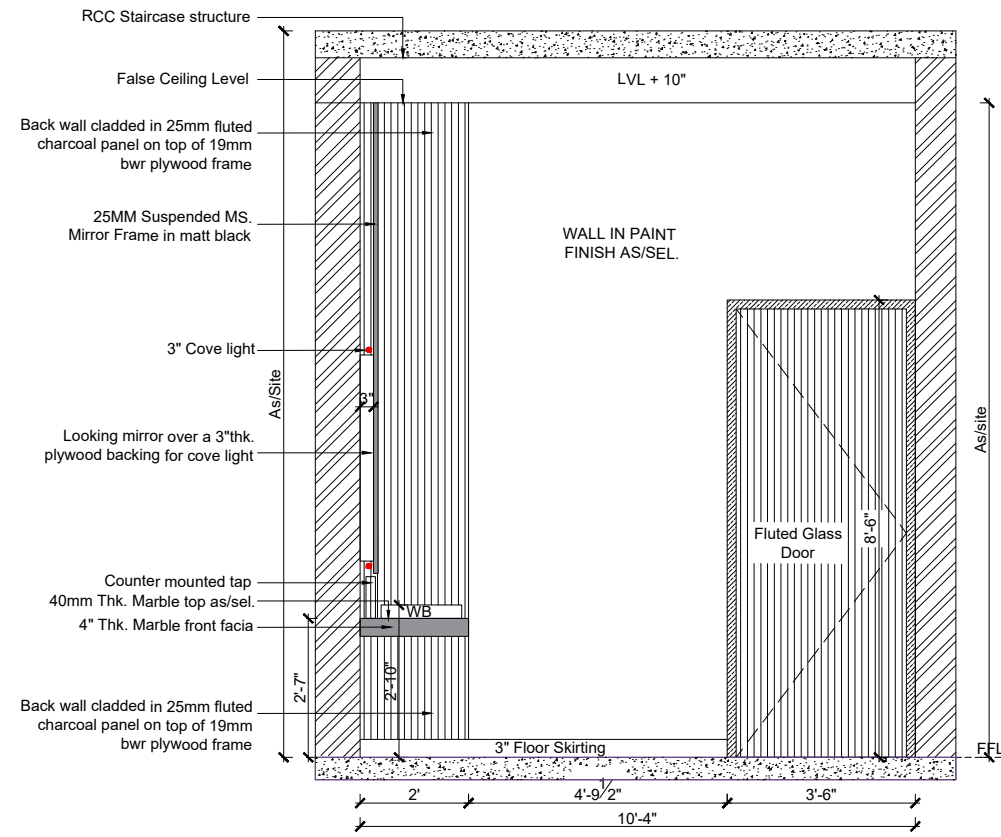
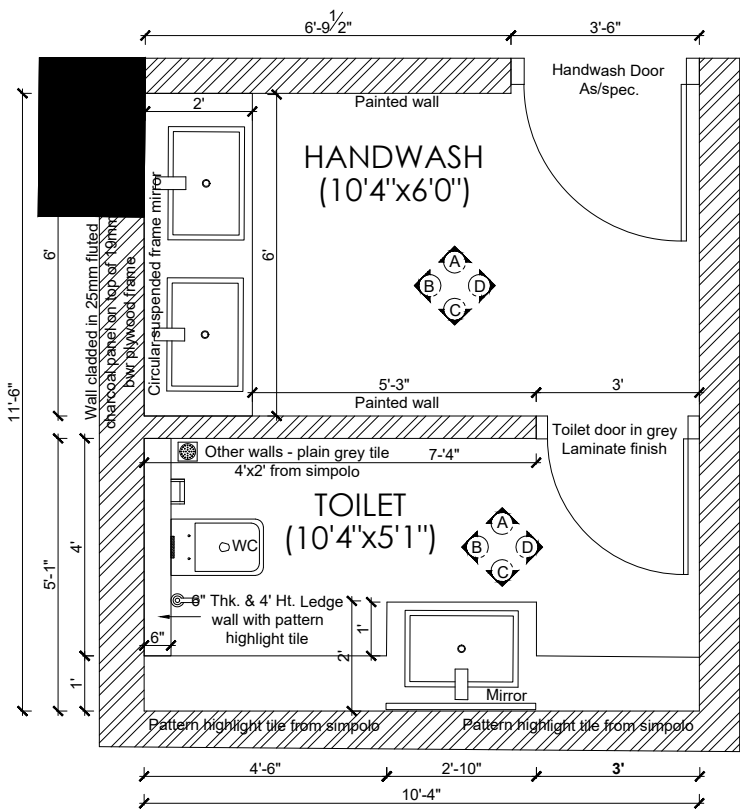


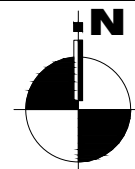
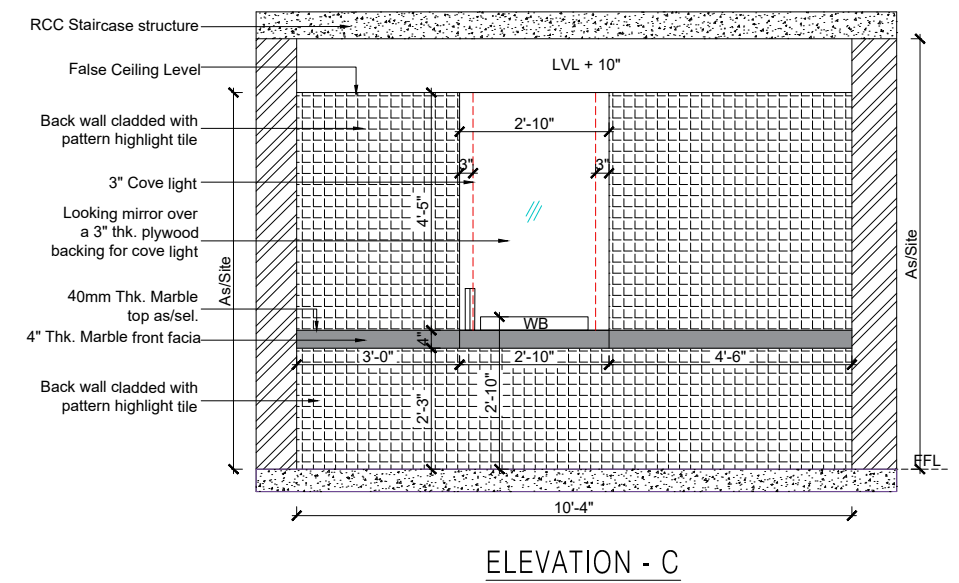
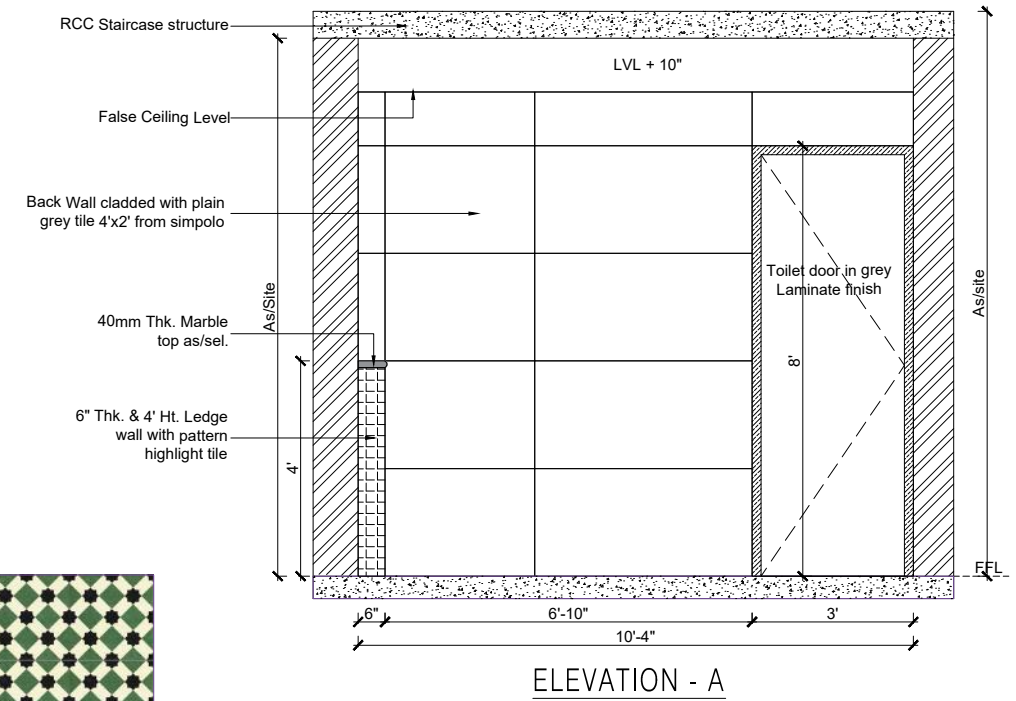
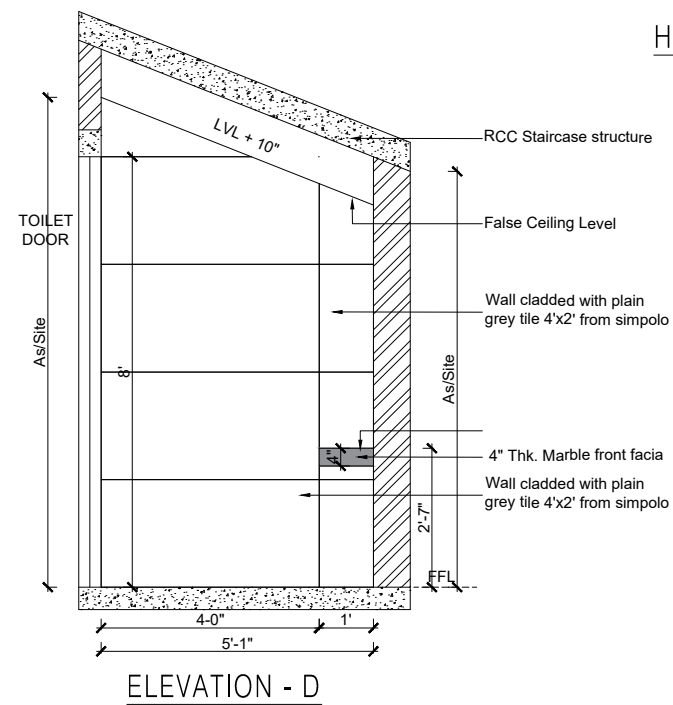
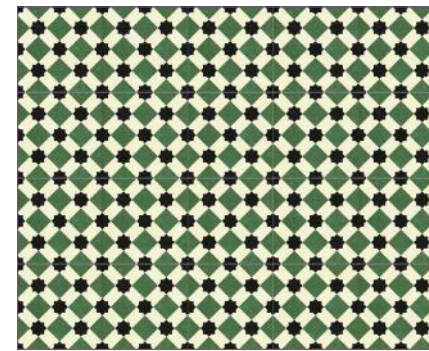
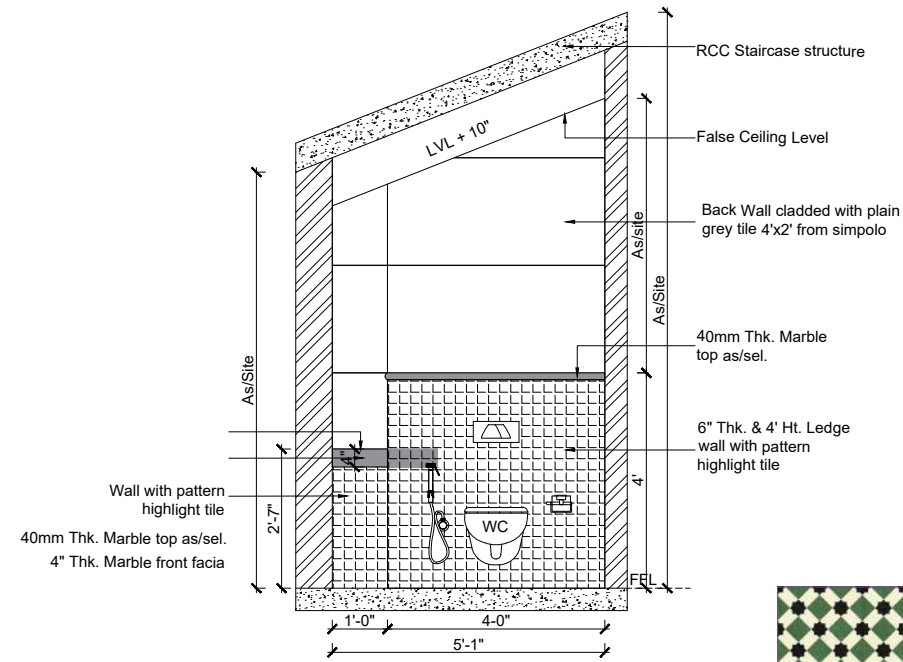
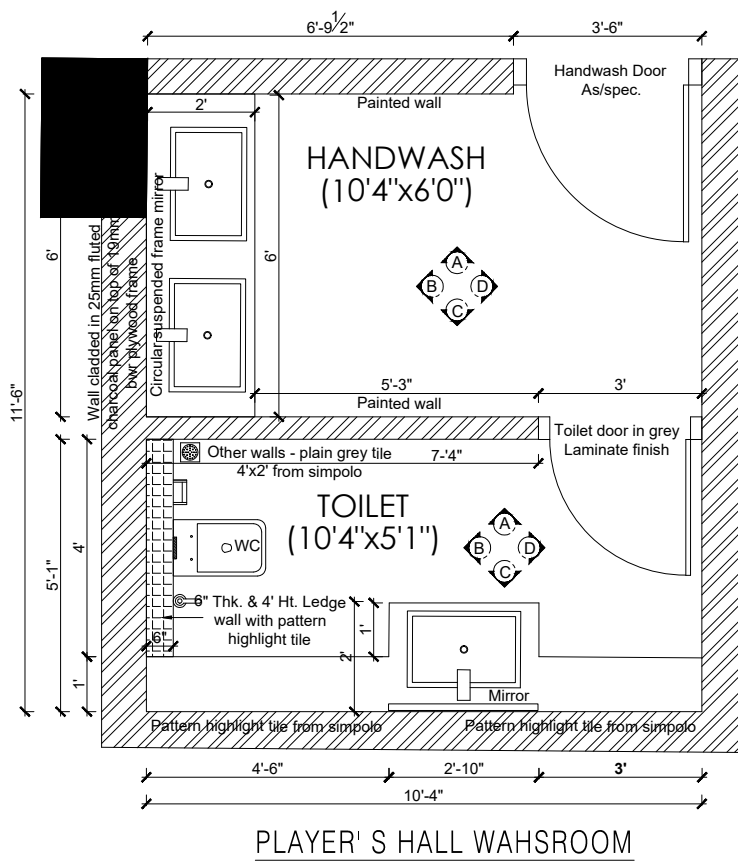
50 X 230MM SOLIDWOOD DOOR FRAME + FLUTED WOOD TEXTURE PANEL CLADDING CONTINUE ON THE FRAME FOR SEAMLESS FLUSHED LOOK

4' ELEVATION

4'



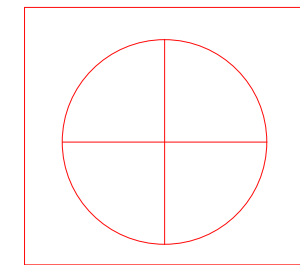
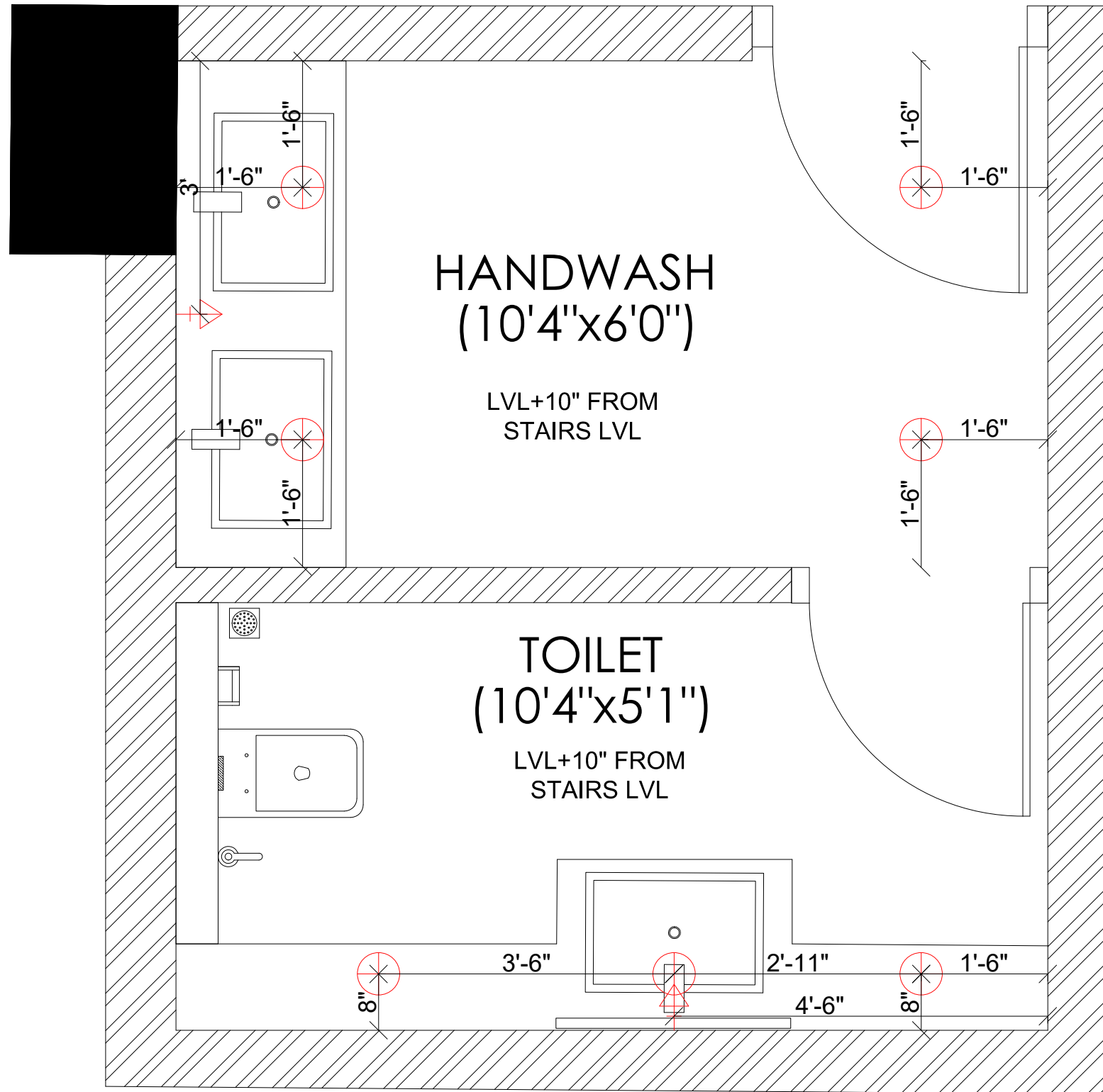




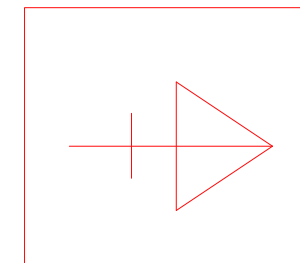




**MANSI DESHPANDE DESIGN  
PROPOSED PLAYER'S HALL  
COUNTRY CRICKET CLUB - RANCHI**



**COB Light (8W)**

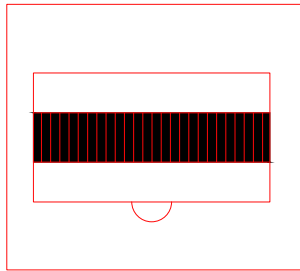
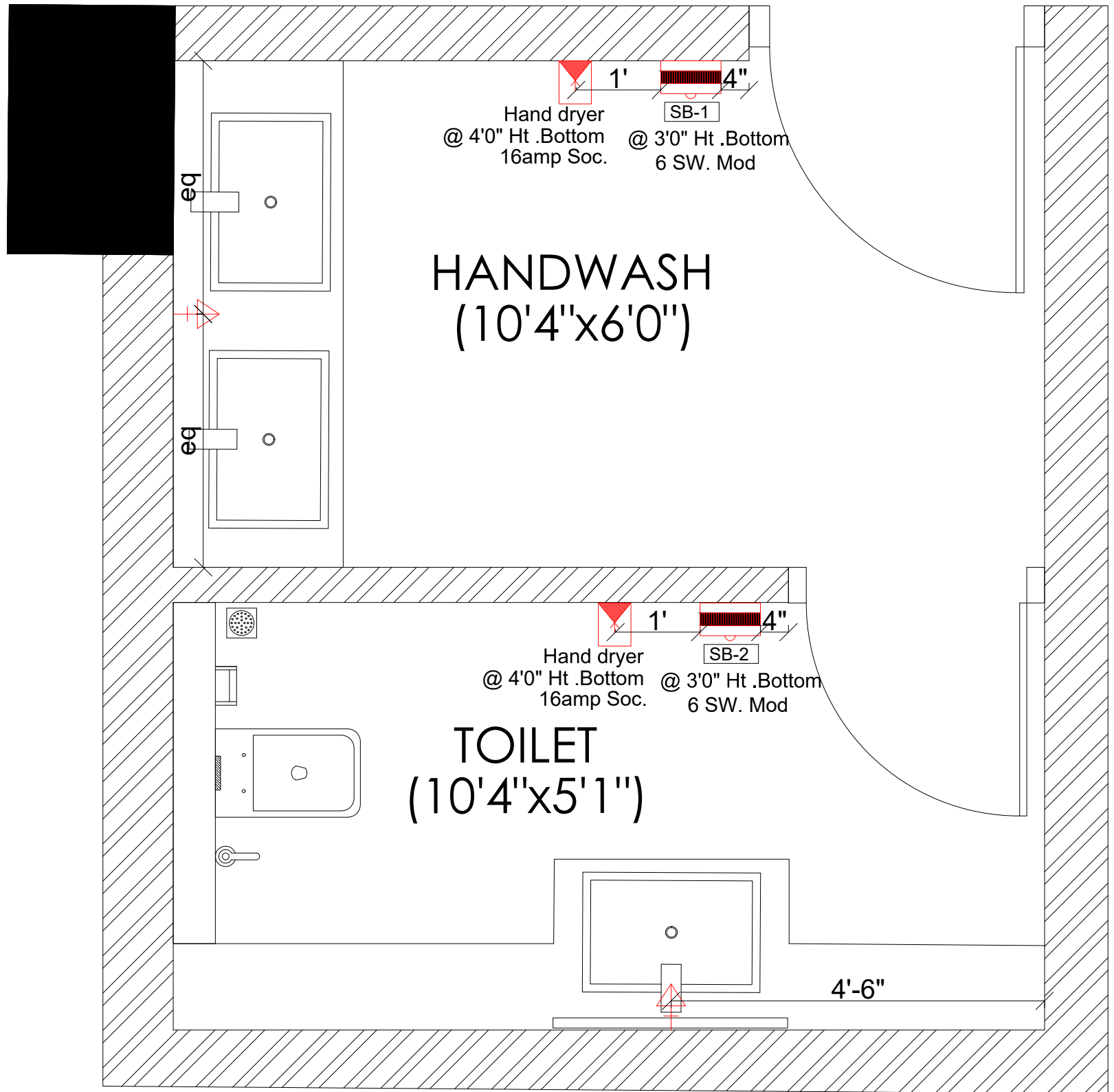


**Wall Light**

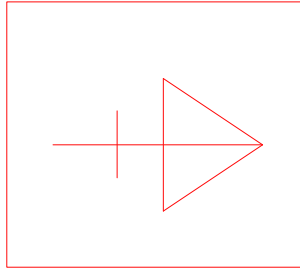
**LIGHTING LAYOUT**



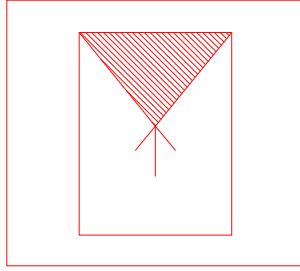




Switch board

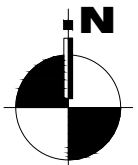


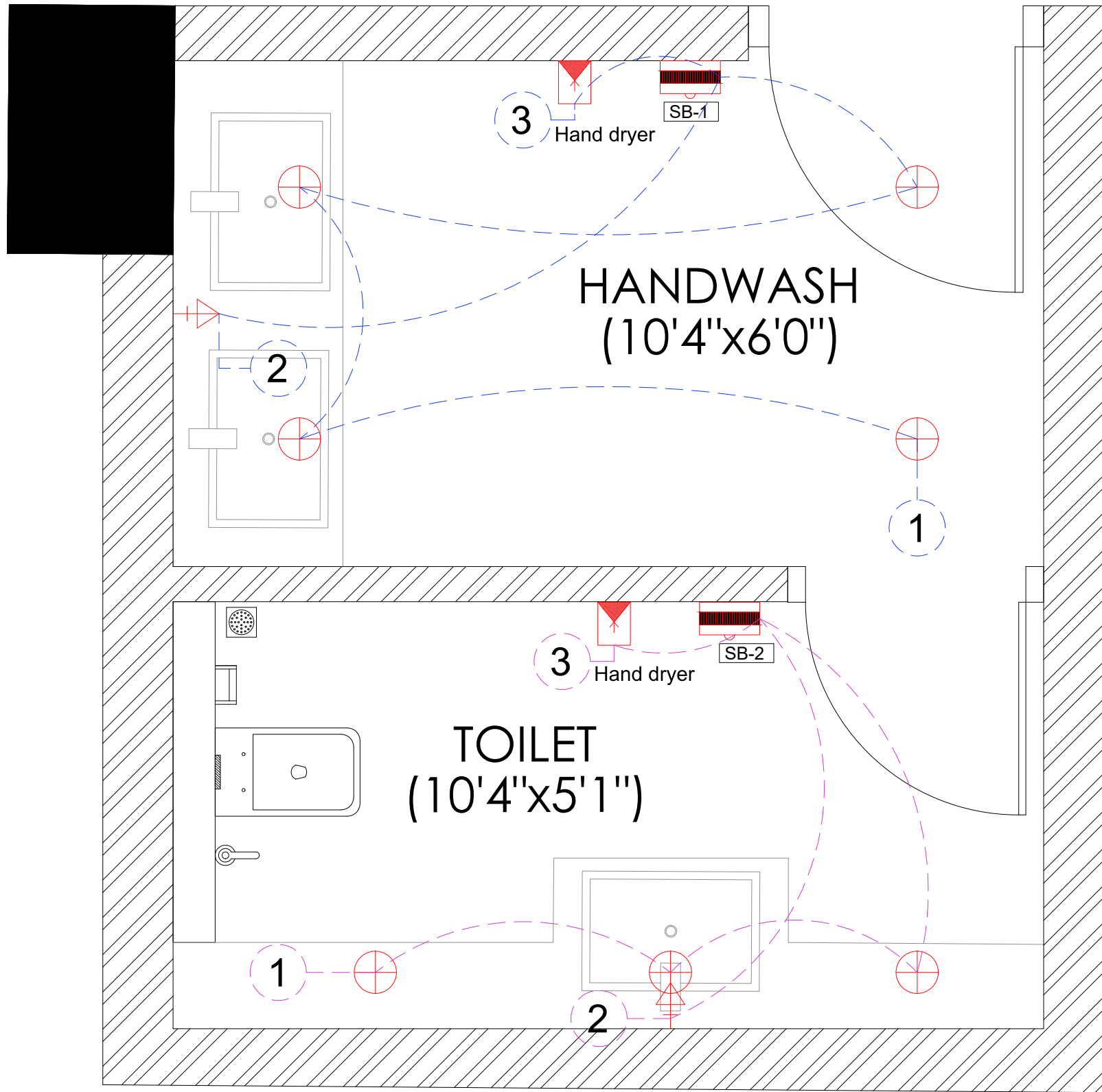
Wall Light



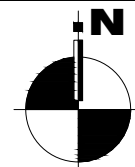
16amp socket

WALL ELECTRICAL LAYOUT





## ELECTRICAL LOOPING LAYOUT







**MANSI DESHPANDE DESIGN CONSULTANCY**  
**PROPOSED PLAYER'S HALL**  
**COUNTRY CRICKET CLUB - RANCHI**





**MANSI DESHPANDE DESIGN CONSULTANCY**  
**PROPOSED PLAYER'S HALL**  
**COUNTRY CRICKET CLUB - RANCHI**